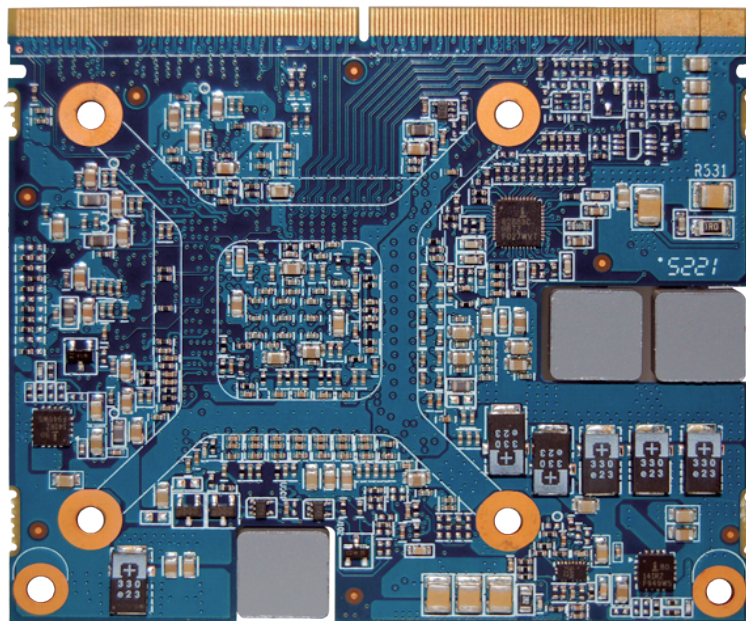
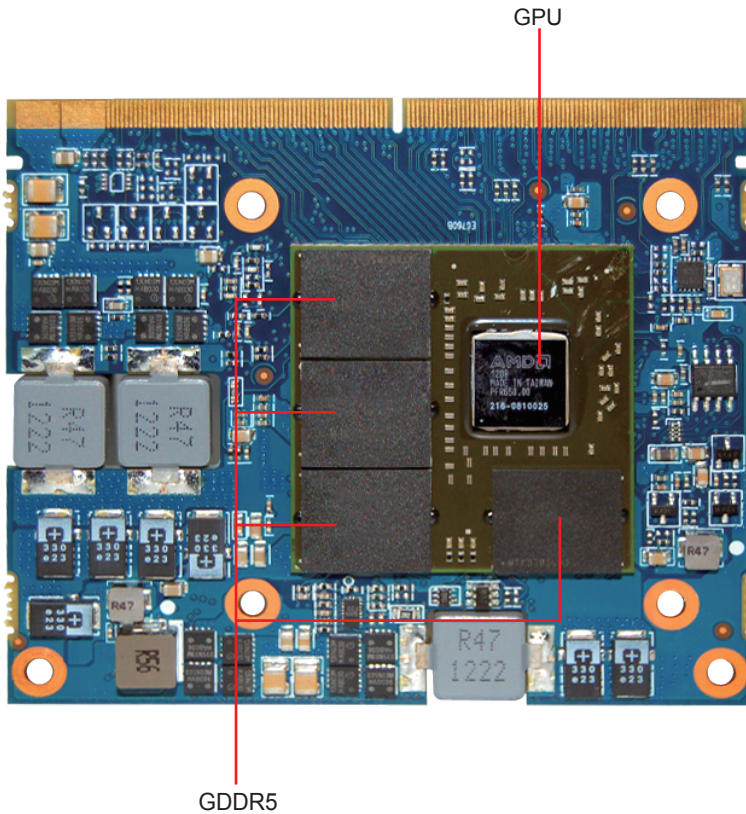


MXM-A6760

MXM3.0 Type A Industrial Graphic Card

J&W IPC

Detail Specification



Mechanical standard

- MXM3.0 typeA Graphic card
- 69mm x 82mm

GPU

- AMD® Radeon E6760
- up to 6 DP HD 1080P output

GDDR

- DRAM Type: GDDR5
- Max Memory Amount: 1024MB
- Memory Interface: 128bit

Performance

- Graphics Clock (MHz): 600MHz
- Memory Clock (MHz): 800MHz (DDR 3200MHz)
- Processor Clock (MHz): 600MHz

Other Specification

- Microsoft DirectX: 11
- Bus Support: MXM III
- Graphics Card Power (W): 45 W

Working condition

- Operation temperature:-10-60 °C
- Operation humidity:10%-90% non-condensing

Certificate :

- CCC, FCC, CE (optional)