

MXM-IC2X1006

Intel® NM10 MXM3.0 Industrial SOM

J&W IPC

Detail Specification

Mechanical standard

- Industrial MXM3.0 SOM
- 129mm x 95 mm(including golden finger)
- Connector standard: MXM3.0 type B(314 PIN)

Chipset

- Intel® NM10

Processor

- Intel® D2550, Dual core, 1.86GHz

BIOS

- AMI BIOS
- 16M Bit SPI BIOS

Memory

- 1 x DDR3 SO-DIMM
- Up to 1066MHz, 4G

Display

- Integrated HD Graphics: GMA3650
- 1 x HDMI output signal
- 1 x VGA output signal
- 1 x LVDS output signal(single channel/24bit)

Audio

- Realtek ALC661 HD audio codec
- 4 channel audio output
- 2 x Line out
- 2 x Mic in
- 2 x Line in signal

COM

- 6 x RS-232, co-lay 1 x RS-485

USB

- 8 x USB2.0 signal

Storage

- 2 x SATA2.0 signal

Expansion Interface

- 4 x PCIE x1 signal
- 1 x GPIO(16 Bit)
- 2 x Fan control signal
- 1 x LPC
- 1 x IR signal
- 1 x SPI

Power Supply

- 12V Power supply (the baseboard supplied)

Working condition

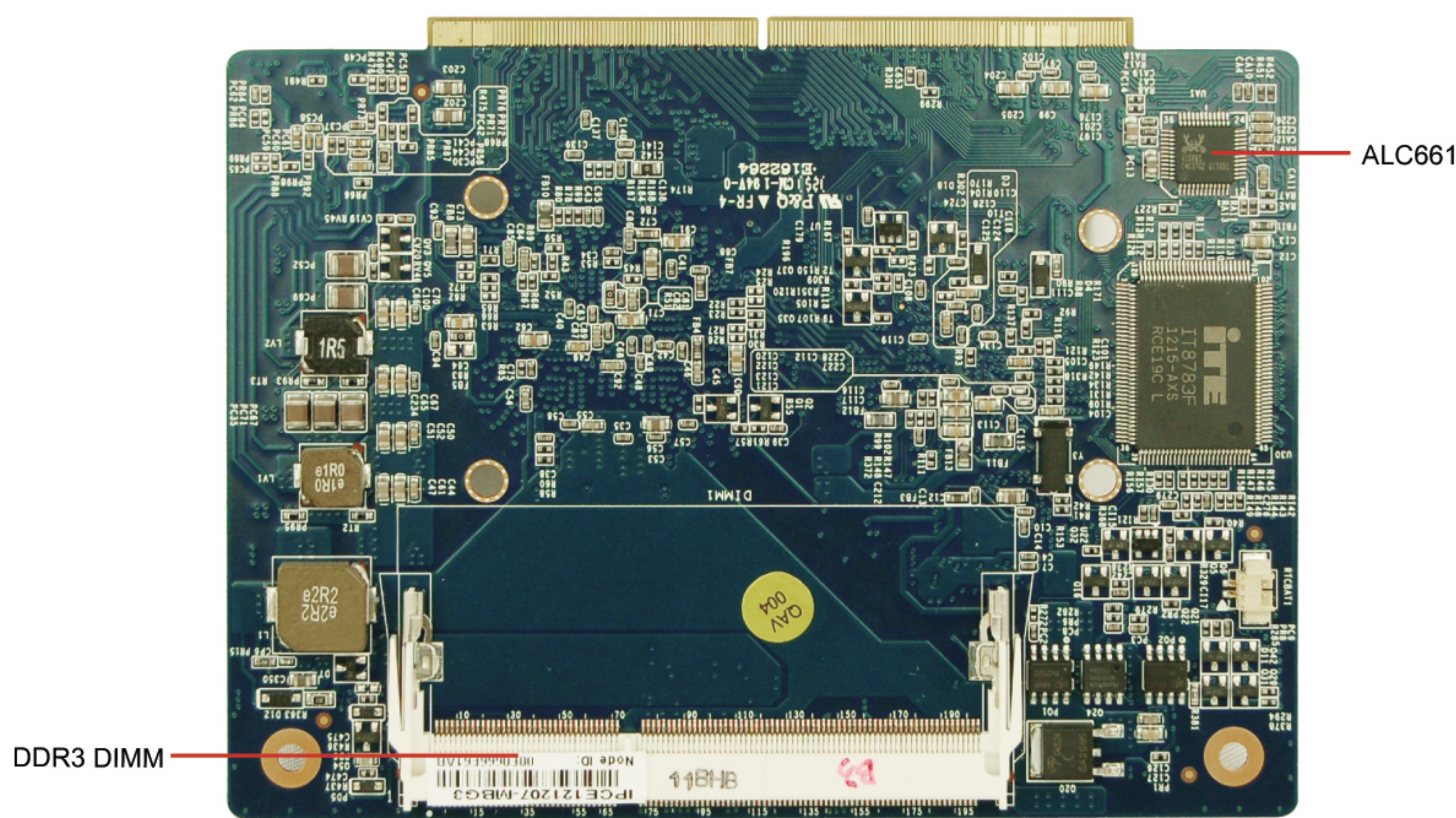
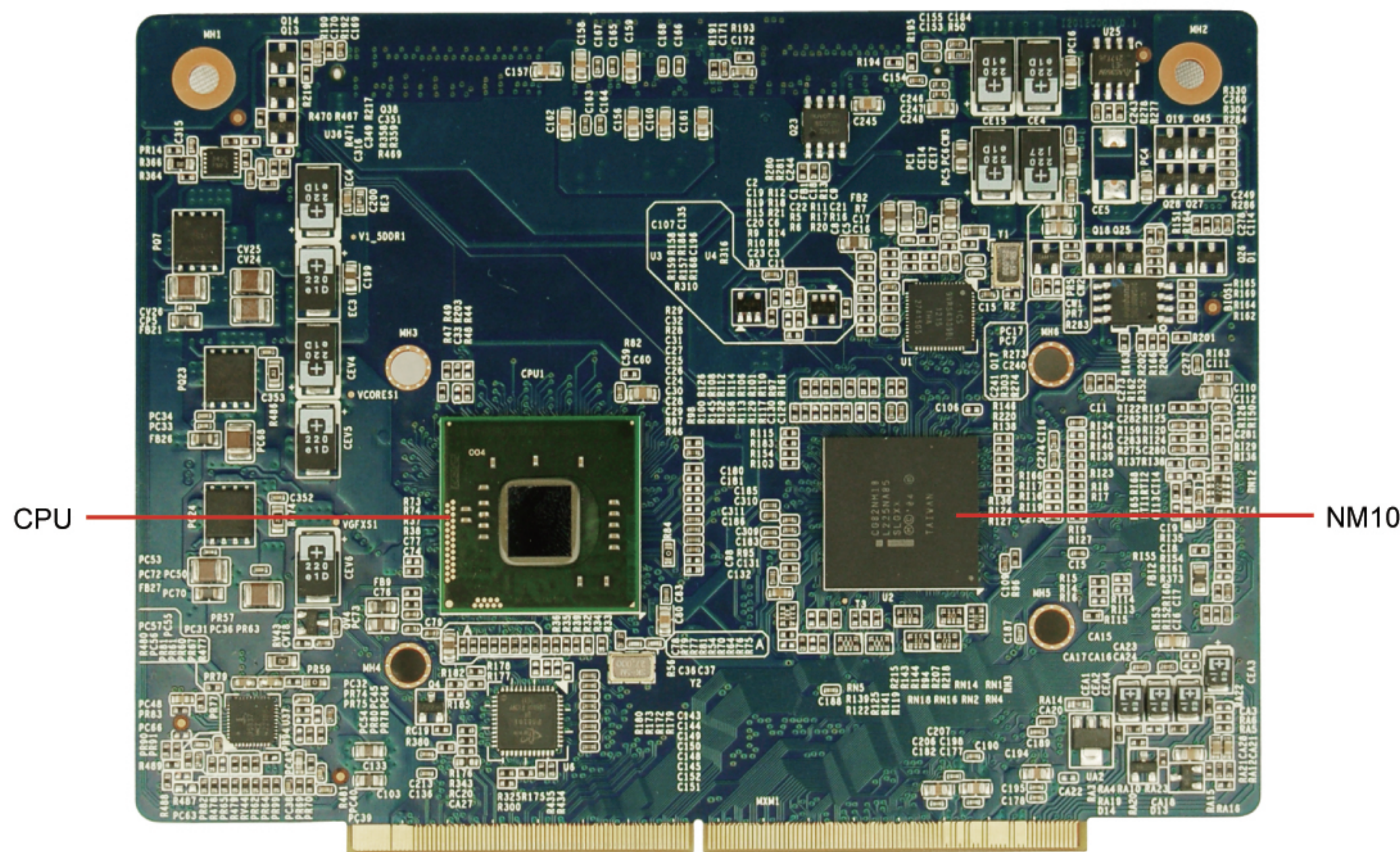
- Operation temperature:-10-60 C
- Operation humidity:10%-90% non-condensing

Certificate

- CCC,FCC,CE(optional)

Accessories

- Manual, Driver CD,



Block Diagram

