

# TEST REPORT

Report No.: BCTC2312909125-6E

---

Applicant: MINIX Technology Limited

---

Product Name: Mini PC

---

Model/Type reference: RIC SJ64-4W

---

Tested Date: 2023-04-13 to 2023-04-25  
2023-11-30 to 2023-12-04

---

Issued Date: 2023-12-06

---

**Shenzhen BCTC Technology Co., Ltd.**



Product Name: Mini PC  
Trademark: MINIX  
Model/Type reference: RIC SJ64-4W, RIC SJ64-8W, RIC SJ64-16W, RIC SJ64-4U,  
RIC SJ64-8U, RIC SJ64-16U, RIC SJ64-MB, RIC SJ64xxxxxxxxx  
(x can be 0-9, A-Z, a-z, “-”, “\_”, “/” or blank for marketing purpose)  
Prepared For: MINIX Technology Limited  
Address: Unit 01, 15/F, Chevalier Commercial Center, No.8 Wang Hoi Road, Kowloon Bay,  
Kowloon, Hong Kong.  
Manufacturer: MINIX Technology Limited  
Address: Unit 01, 15/F, Chevalier Commercial Center, No.8 Wang Hoi Road, Kowloon Bay,  
Kowloon, Hong Kong.  
Prepared By: Shenzhen BCTC Technology Co., Ltd.  
Address: 101M., Unit 1, Building1, Pengyuan, No.18, Lilang Road, Shanglilang Community,  
Nanwan Street, Longgang District, Shenzhen, Guangdong, China  
Sample Received Date: 2023-04-11  
2023-11-30  
Sample tested Date: 2023-04-13 to 2023-04-25  
2023-11-30 to 2023-12-04  
Report No.: BCTC2312909125-6E  
Test Standards ETSI EN 301 489-1 V2.2.3 (2019-11)  
ETSI EN 301 489-3 V2.3.2 (2023-01)  
ETSI EN 301 489-17 V3.2.4 (2020-09)  
Test Results PASS  
Remark: This is EMC test report.

Tested by:



Kang Chen/ Project Handler

Approved by:



Sewen Guo/Reviewer

The test report is effective only with both signature and specialized stamp. This result(s) shown in this report refer only to the sample(s) tested. Without written approval of Shenzhen BCTC Technology Co., Ltd, this report can't be reproduced except in full. The tested sample(s) and the sample information are provided by the client.



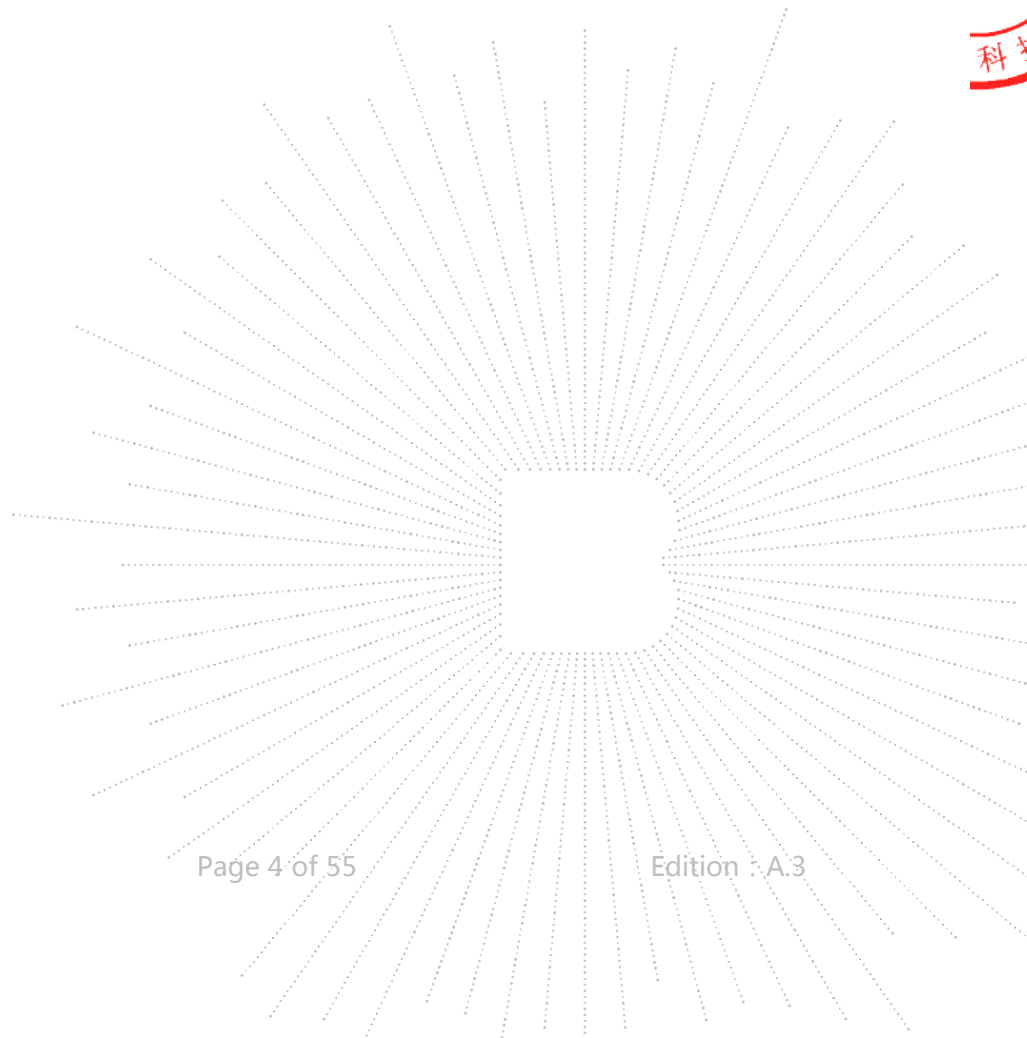
## Table of Content

Test Report Declaration	Page
1. Version .....	5
2. Test Summary .....	6
3. Measurement Uncertainty .....	7
4. Product Information and Test Setup .....	8
4.1 Product Information .....	8
4.2 Test Setup Configuration .....	8
4.3 Support Equipment .....	8
4.5 Test Mode .....	8
5. Test Facility and test Instrument Used .....	10
5.1 Test Facility .....	10
5.2 Test Instrument Used .....	10
6. Conducted Emissions .....	13
6.1 Block Diagram Of Test Setup .....	13
6.2 Limit .....	13
6.3 Test procedure .....	13
6.4 Test Result .....	14
7. Asymmetric mode conducted emissions .....	16
7.1 Block Diagram Of Test Setup .....	16
7.2 Limit .....	16
7.3 Test procedure .....	16
7.4 Test Result .....	17
8. Radiated Emissions Test .....	18
8.1 Block Diagram Of Test Setup .....	18
8.2 Limits .....	18
8.3 Test Procedure .....	19
8.4 Test Results .....	20
9. Harmonic current emission(H) .....	24
9.1 Block Diagram of Test Setup .....	24
9.2 Limit .....	24
9.3 Test Procedure .....	24
9.4 Test Results .....	24
10. Voltage Fluctuations & Flicker (F) .....	25
10.1 Block Diagram of Test Setup .....	25
10.2 Limit .....	25
10.3 Test Procedure .....	25
10.4 Test Results .....	26
11. Immunity Test of General the Performance Criteria .....	27
12. Electrostatic Discharge (ESD) .....	29
12.1 Test Specification .....	29
12.2 Block Diagram of Test Setup .....	29
12.3 Test Procedure .....	29
12.4 Test Results .....	30
13. Continuous RF Electromagnetic Field Disturbances(RS) .....	31
13.1 Test Specification .....	31
13.2 Block Diagram of Test Setup .....	31

C T  
 3C  
 PPR  
 检测

13.3	Test Procedure .....	32
13.4	Test Results .....	32
14.	Electrical fast transients/burst (EFT) .....	33
14.1	Test Specification.....	33
14.2	Block Diagram of EUT Test Setup .....	33
14.3	Test Procedure .....	33
14.4	Test Results .....	34
15.	Surges Immunity Test .....	35
15.1	Test Specification.....	35
15.2	Block Diagram of EUT Test Setup .....	35
15.3	Test Procedure .....	35
15.4	Test Result.....	36
16.	Continuous Induced RF Disturbances (CS) .....	37
16.1	Test Specification.....	37
16.2	Block Diagram of EUT Test Setup .....	37
16.3	Test Procedure .....	37
16.4	Test Result.....	38
17.	Voltage dips and interruptions (DIPS) .....	39
17.1	Test Specification.....	39
17.2	Block Diagram of EUT Test Setup .....	39
17.3	Test Procedure .....	39
17.4	Test Result.....	40
18.	EUT Photographs.....	41
19.	EUT Test Setup Photographs.....	49

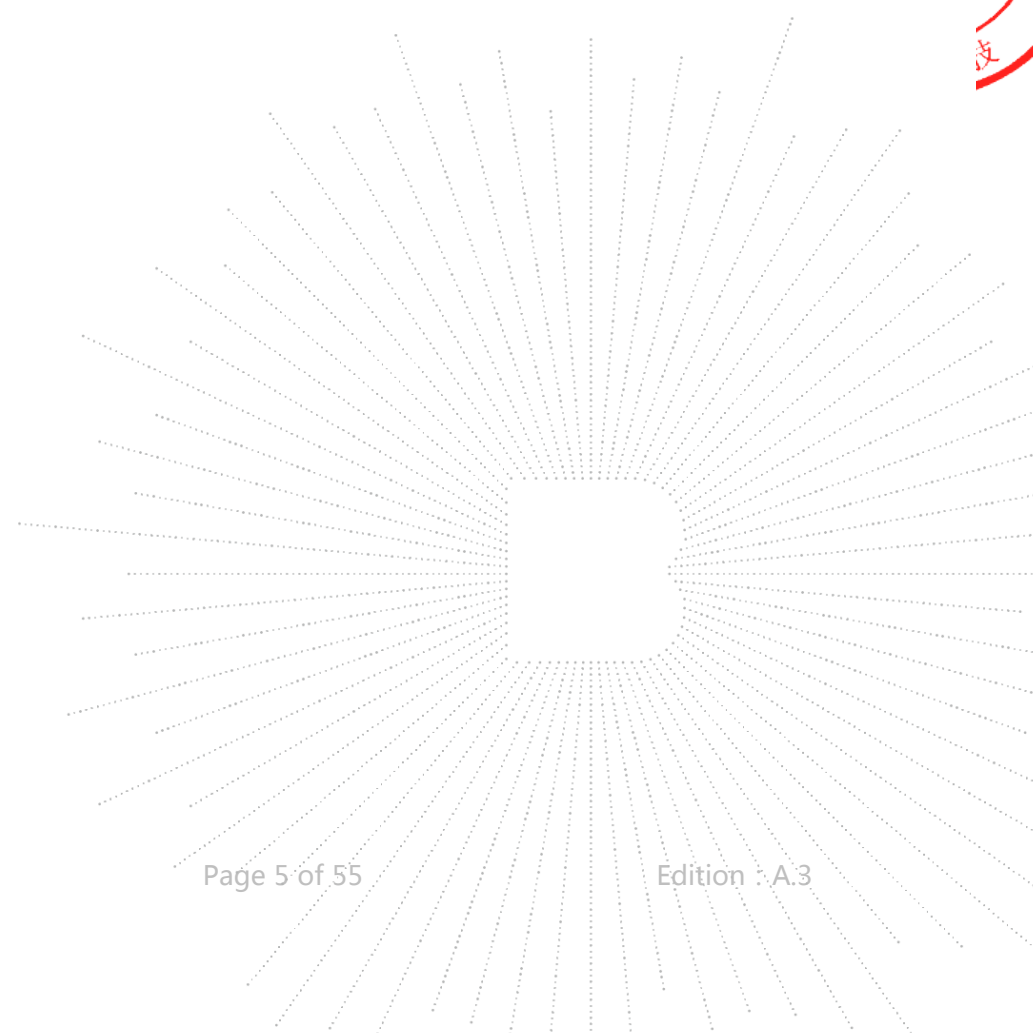
ECH  
TC  
OV  
科



**1. Version**

Report No.	Issue Date	Description	Approved
BCTC2312909125-6E	2023-12-06	Original	Valid

Note: According to the original report (BCTC2310249255E), only the internal test system of this product has been changed, and all the others have not been changed, and only radiation testing is required  
 Note\*: On the basis of the original report (BCTC2304879606-4E), the application program of the product has been modified, adding WIFI 5G Band 1 and Band 4, the other remains unchanged, only need to carry out radiation detection, and other refer to the original report



## 2. Test Summary

The Product has been tested according to the following specifications:

Emission			
Standard		Test Item	Test result
ETSI EN 301 489-1	8.2	Radiated Emissions	Pass
	8.7	Asymmetric mode conducted emissions	Pass
	8.4	Conducted emissions from the AC mains power ports	Pass
	8.5	Harmonic current emission(H)	N/A
	8.6	Voltage fluctuations & flicker(F)	Pass
	9.2	Continuous RF electromagnetic field disturbances(RS)	Pass#
	9.3	Electrostatic Discharge	Pass
	9.4	Fast Transients, Common Mode	Pass
	9.5	Continuous induced RF disturbances (CS)	Pass
	9.6	Transient and Surges in the Vehicular Environment	N/A
	9.7	Voltage dips and interruptions (DIPS)	Pass
9.8	Surges	Pass	

Remark:

- The N/A is an abbreviation for not applicable.
- "#" indicates the testing item(s) was (were) fulfilled by subcontracted lab.

BCTC CO., LTD

### 3. Measurement Uncertainty

Where relevant, the following measurement uncertainty levels have been estimated for tests performed on the Product as specified in CISPR 16-4-2. This uncertainty represents an expanded uncertainty expressed at approximately the 95% confidence level using a coverage factor of  $k=2$ .

Test item	Value (dB)
Conducted Emission (150kHz-30MHz)	3.20
Radiated Emission(30MHz~1GHz)	4.80
Radiated Emission(1GHz~6GHz)	4.90



## 4. Product Information and Test Setup

### 4.1 Product Information

Model/Type reference:	RIC SJ64-4W, RIC SJ64-8W, RIC SJ64-16W, RIC SJ64-4U, RIC SJ64-8U, RIC SJ64-16U, RIC SJ64-MB, RIC SJ64xxxxxxxxxx (x can be 0-9, A-Z, a-z, “-”, “_”, “/” or blank for marketing purpose)	
Model differences:	These models are identical in circuitry and electrical, mechanical and physical construction; Only the appearance is different; We chose RIC SJ64-4W as the final test prototype	
Antenna installation:	External antenna	
Antenna Gain:	BT	0 dBi
	WiFi(2.4GHz)	0 dBi
	WiFi (5.1GHz):	0 dBi
	WiFi (5.8GHz):	0 dBi
Ratings:	AC 100-240V~50/60Hz	
Adapter:	Mode: NB-65B19 Input: 100-240VAC,50/60Hz, 1.6A Max Output: 19V/3.42A	

### 4.2 Test Setup Configuration

See test photographs attached in EUT test setup photographs for the actual connections between Product and support equipment.

### 4.3 Support Equipment

No.	Device Type	Brand	Model	Series No.	Note
1.	---	---	--	---	---

#### Notes

- All the equipment/cables were placed in the worst-case configuration to maximize the emission during the test.
- Grounding was established in accordance with the manufacturer's requirements and conditions for the intended use.

### 4.5 Test Mode

Investigation has been done on all the possible configurations for searching the worst cases. The following table is a list of the test modes shown in this test report.

Test Mode	
Mode 1:	WIFI Link
Mode 2:	BT Link
Mode 3:	Standby



Test item	Test Mode	Test Voltage
Conducted emissions from the AC mains power ports (150KHz-30MHz) Class B	Mode 1*	AC 230V/50Hz
Asymmetric mode conducted emissions	Mode 1*	AC 230V/50Hz
Radiated emissions(30MHz-6GHz) Class B	Mode 1*	AC 230V/50Hz
Voltage fluctuations & flicker(F)	Mode 1	AC 230V/50Hz
Electrostatic discharge (ESD) <input checked="" type="checkbox"/> Air Discharge: $\pm 2,4,8\text{Kv}$ <input checked="" type="checkbox"/> Contact Discharge: $\pm 2,4\text{kV}$ <input checked="" type="checkbox"/> HCP & VCP: $\pm 2,4\text{kV}$	Mode 1	AC 230V/50Hz
Continuous RF electromagnetic field disturbances(RS) <input checked="" type="checkbox"/> 80MHz-6000MHz , 3V/m,80% Front, Rear, Left, Right H/V	Mode 1	AC 230V/50Hz
Electrical fast transients/burst (EFT) B <input checked="" type="checkbox"/> 1kV AC(Input) <input type="checkbox"/> 0.5kV DC(Input) <input checked="" type="checkbox"/> 0.5kV signal,Telec,control	Mode 1	AC 230V/50Hz
Surges B <input checked="" type="checkbox"/> 1kV Line-Line, <input checked="" type="checkbox"/> 2kV Line-PE, N-PE <input type="checkbox"/> 0.5kVDC(Input) <input checked="" type="checkbox"/> 1KV, <input type="checkbox"/> 4KV signal,Telec, control Line-Line:90°+1kV,270°-1kV Line-PE:90°+2kV,270°-2kV N-PE:90°-2kV,270°+2kV	Mode 1	AC 230V/50Hz
Continuous induced RF disturbances (CS) A 0.15MHz - 80MHz 3V <input checked="" type="checkbox"/> AC( Input) <input type="checkbox"/> DC(Input) <input checked="" type="checkbox"/> signal, Telec, control	Mode 1	AC 230V/50Hz
Voltage dips and interruptions (DIPS) Less 5% 0.5P 10ms      B 70% 25P 500ms      C Voltage Interruptions less5% 250P 5000ms      C	Mode 1	AC 230V/50Hz
All test mode were tested and passed, only Conducted Emissions, Radiated Emissions shows (*) is the worst case mode which were recorded in this report.		

C T  
 30  
 PPR  
 字测

## 5. Test Facility and test Instrument Used

### 5.1 Test Facility

All measurement facilities used to collect the measurement data are located:

Shenzhen BCTC Technology Co., Ltd.

Address: 101M., Unit 1, Building1, Pengyuan, No.18, Lilang Road, Shanglilang Community, Nanwan Street, Longgang District, Shenzhen, Guangdong, China

Shenzhen BCTC Testing Co., Ltd.

Address:1-2/F., Building B, Pengzhou Industrial Park, No.158, Fuyuan 1st Road, Zhancheng, Fuhai Subdistrict, Bao'an District, Shenzhen, Guangdong, China.

The site and apparatus are constructed in conformance with the requirements of ANSI C63.4 and CISPR 16-1-1 other equivalent standards.

### 5.2 Test Instrument Used

Conducted emissions Test					
Equipment	Manufacturer	Model#	Serial#	Last Cal.	Next Cal.
Receiver	R&S	ESCI	101421	2022-06-01	2023-05-31
AMN	SCHWHRZBECK	NNBM8127	8127739	2022-06-01	2023-05-31
Pulse Limiter	SCHWHRZBECK	VTSD 9561-F-N	00547	2022-06-01	2023-05-31
Software	EZ-EMC	Ver.EMC-CON 3A1	/	/	/

Radiated disturbance					
Equipment	Manufacturer	Model#	Serial#	Last Cal.	Next Cal.
Broadband antenna	SCHWHRZBECK	VULB9160	3369	May 15, 2023	May 14, 2024
Receiver	R&S	ESPI	101396	Sep.6, 2023	Sep.5, 2024
Preamplifier	SCHWHRZBECK	BBV9743	119	May 11, 2023	May 10, 2024
Horn antenna	SCHWARZBECK	BBHA 9120 D	2792	Sep.19, 2023	Sep.18, 2024
Preamplifier	EMC INSTRUMENTS CORPORATION	EMC0518A45SE E	EMT-SZ22 33	Sep.6, 2023	Sep.5, 2024
RF cable 1#	/	5M	18038628	Dec. 23, 2022	Dec. 22, 2023
RF cable 2#	/	8.5M	18038631	Dec. 23, 2022	Dec. 22, 2023
RF cable 3#	/	9M	18038626	Dec. 23, 2022	Dec. 22, 2023
RF cable 4#	SKET	5M	#10	Dec. 23, 2022	Dec. 22, 2023
Software	EZ-EMC	Ver.FA-03A2	/	/	/

Harmonic / Flicker Test					
Equipment	Manufacturer	Model#	Serial#	Last Cal.	Next Cal.
Harmonic tester	KIKUSUI	KHA1000	VA002162	Sep.11, 2023	Sep.10, 2024
Linear impedance network	KIKUSUI	LIN1020JF	UL001611	Sep.6, 2023	Sep.5, 2024
Multi outlet unit	KIKUSUI	OT01-RHA	N/A	Sep.11, 2023	Sep.10, 2024
Power supply network	KIKUSUI	PCR4000M	UK001879	Sep.6, 2023	Sep.5, 2024
Software	KIKUSUI	Ver3.6.1.00	/	/	

Electrostatic discharge Test					
Equipment	Manufacturer	Model#	Serial#	Last Cal.	Next Cal.
Electrostatic discharge generator	3C TEST	EDS 30V	ES0121614	Sep.11, 2023	Sep.10, 2024

Continuous RF Electromagnetic Field Disturbances Test (Shenzhen BCTC Testing Co., Ltd.)					
Equipment	Manufacturer	Model#	Serial#	Last Cal.	Next Cal.
Power meter	Keysight	E4419	A00065	May 15, 2023	May 14, 2024
Power sensor	Keysight	E9300A	US39211659	May 15, 2023	May 14, 2024
Power sensor	Keysight	E9300A	US39211305	May 15, 2023	May 14, 2024
Amplifier	SKET	HAP_801000-250W	21201805013	May 15, 2023	May 14, 2024
Amplifier	SKET	HAP_0103-75W	21201805014	May 15, 2023	May 14, 2024
Amplifier	SKET	HAP_0306-50W	21201805015	May 15, 2023	May 14, 2024
Stacked double Log.-Per. Antenna	Schwarzbeck	STLP 9129	00077	\	\
Field Probe	Narda	EP-601	611WX80256	May 15, 2023	May 14, 2024
Signal Generator	Agilent	N5181A	MY50143748	May 15, 2023	May 14, 2024
Software	SKET	EMC-S	1.2.0.18	\	\

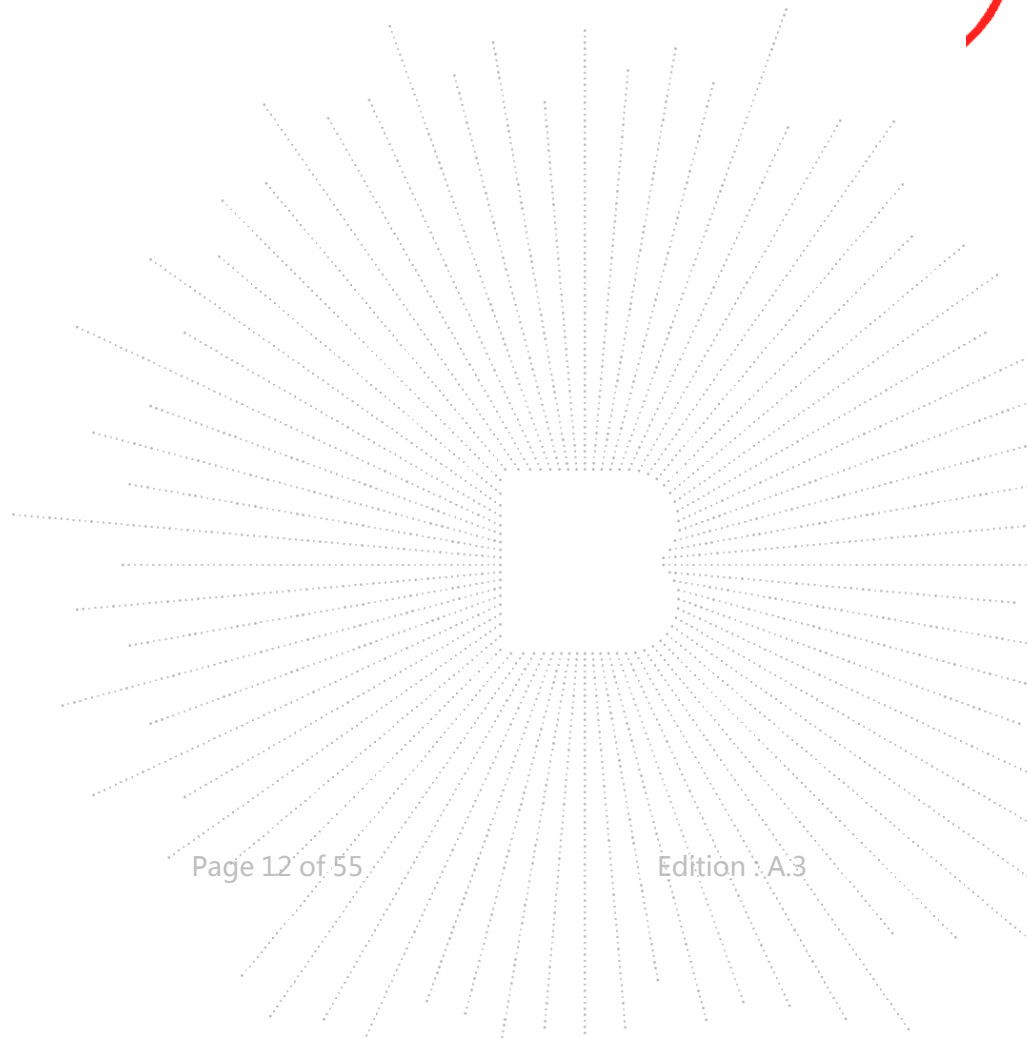
Fast transients immunity Test					
Equipment	Manufacturer	Model#	Serial#	Last Cal.	Next Cal.
Fast pulse generator	Prima	EFT61004AG	PR14054467	Sep.6, 2023	Sep.5, 2024
Coupling forceps	Prima	EFT61004AG	BCTC009E	Sep.6, 2023	Sep.5, 2024



Surges immunity Test					
Equipment	Manufacturer	Model#	Serial#	Last Cal.	Next Cal.
Power line lightning strike generator	Prima	SUG61005BX	PR12045446	Sep.6, 2023	Sep.5, 2024
Single phase transformer	Prima	JMB-3KVA	LL-PLM1407	Sep.6, 2023	Sep.5, 2024

Injected currents immunity Test					
Equipment	Manufacturer	Model#	Serial#	Last Cal.	Next Cal.
CS signal generator	SCHLODER	CDG6000	126B1281	Sep.6, 2023	Sep.5, 2024
Injection forceps	SCHLODER	EMCL-20	132A1214/2015	Sep.6, 2023	Sep.5, 2024
CDN	SCHLODER	CDN-M2+3	A2210320/2015	Sep.6, 2023	Sep.5, 2024
6dB Attenuator	N/A	CDG60100	201411010015	Sep.6, 2023	Sep.5, 2024
Software	HUBERT	Version 1.3.0(04.02.2014)	126B1300	/	/

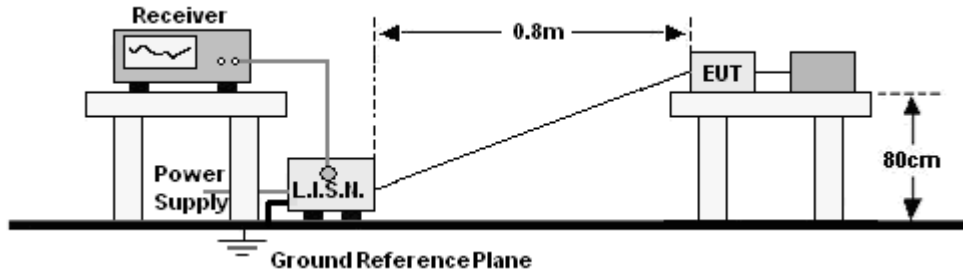
Voltage dips and interruptions immunity Test					
Equipment	Manufacturer	Model#	Serial#	Last Cal.	Next Cal.
Voltage drop tester	Prima	DRP61011AG	PR14086284	Sep.6, 2023	Sep.5, 2024



## 6. Conducted Emissions

### 6.1 Block Diagram Of Test Setup

For mains ports:



### 6.2 Limit

Limits for Conducted emissions at the mains ports of Class B MME

Frequency range MHz)	Limits dB( $\mu$ V)	
	Quasi-peak	Average
0,15 to 0,50	66 to 56*	56 to 46*
0,50 to 5	56	46
5 to 30	60	50

Notes: 1. \*Decreasing linearly with logarithm of frequency.  
2. The lower limit shall apply at the transition frequencies.

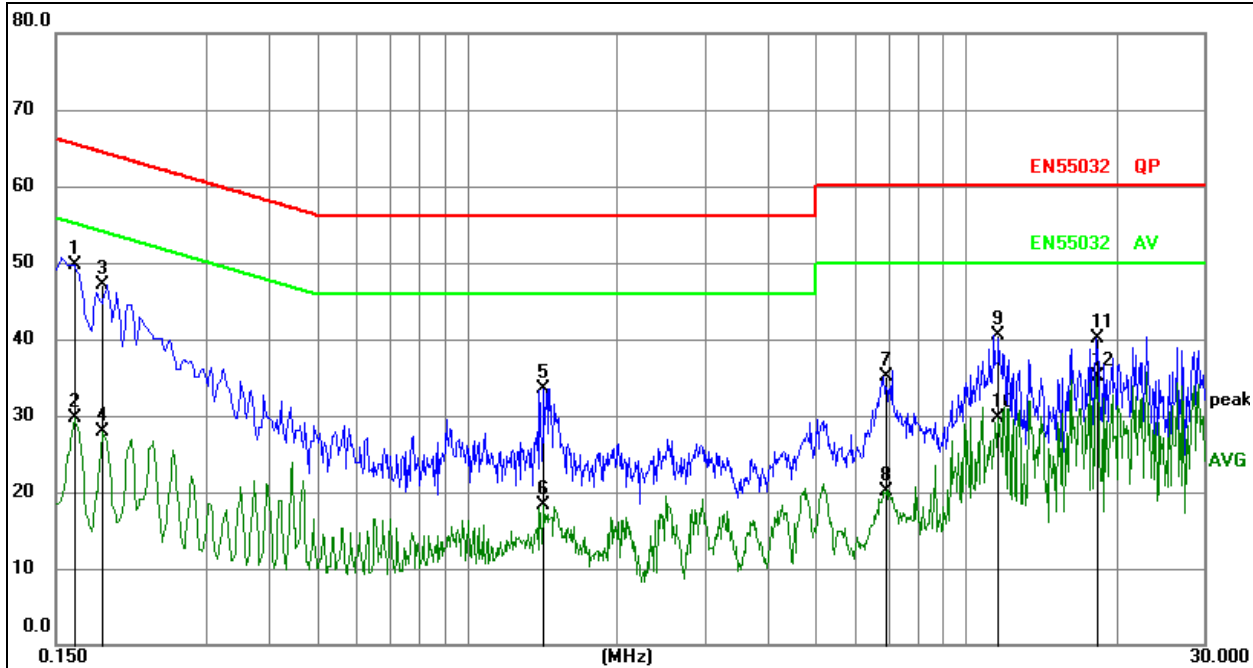
### 6.3 Test procedure

**For mains ports:**

- The Product was placed on a nonconductive table 0.8 m above the horizontal ground reference plane, and 0.4 m from the vertical ground reference plane, and connected to the main through Line Impedance Stability Network (L.I.S.N).
- The RBW of the receiver was set at 9 kHz in 150 kHz ~ 30MHz with Peak and AVG detector in Max Hold mode. Run the receiver's pre-scan to record the maximum disturbance generated from Product in all power lines in the full band.
- For each frequency whose maximum record was higher or close to limit, measure its QP and AVG values and record.

## 6.4 Test Result

Temperature:	26 °C	Relative Humidity:	54%
Pressure:	101KPa	Phase :	L
Test Mode:	Mode 1	Test Voltage :	AC 230V/50Hz

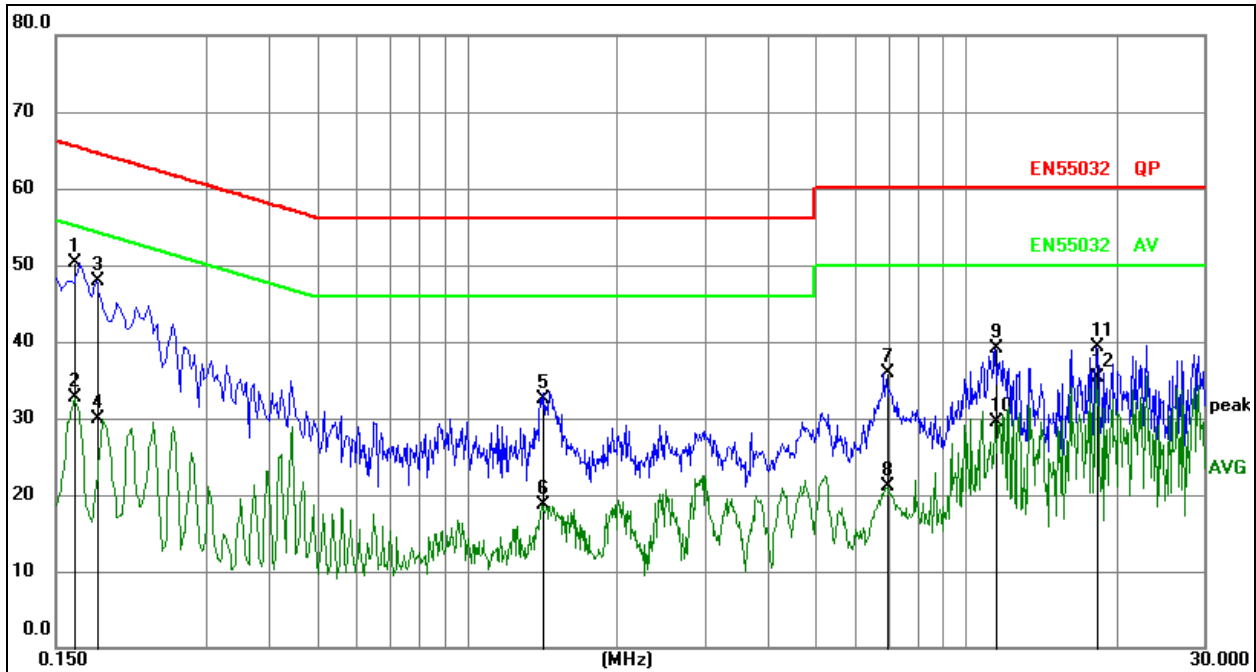


## Remark:

1. All readings are Quasi-Peak and Average values.
2. Factor = Insertion Loss + Cable Loss.
3. Measurement = Reading Level + Correct Factor
4. Over = Measurement - Limit

No.	Mk.	Freq. MHz	Reading Level dB	Correct Factor dB	Measure- ment dBuV	Limit dBuV	Over dB	Detector	Comment
1		0.1633	39.53	10.23	49.76	65.29	-15.53	QP	
2		0.1633	19.53	10.23	29.76	55.29	-25.53	AVG	
3		0.1853	36.82	10.24	47.06	64.24	-17.18	QP	
4		0.1853	17.67	10.24	27.91	54.24	-26.33	AVG	
5		1.4256	23.42	10.17	33.59	56.00	-22.41	QP	
6		1.4256	8.16	10.17	18.33	46.00	-27.67	AVG	
7		6.9141	24.72	10.38	35.10	60.00	-24.90	QP	
8		6.9141	9.81	10.38	20.19	50.00	-29.81	AVG	
9		11.6208	30.21	10.39	40.60	60.00	-19.40	QP	
10		11.6208	19.36	10.39	29.75	50.00	-20.25	AVG	
11		18.2316	29.55	10.50	40.05	60.00	-19.95	QP	
12	*	18.2316	24.58	10.50	35.08	50.00	-14.92	AVG	

Temperature:	26 °C	Relative Humidity:	54%
Pressure:	101KPa	Phase :	N
Test Mode:	Mode 1	Test Voltage :	AC 230V/50Hz


**Remark:**

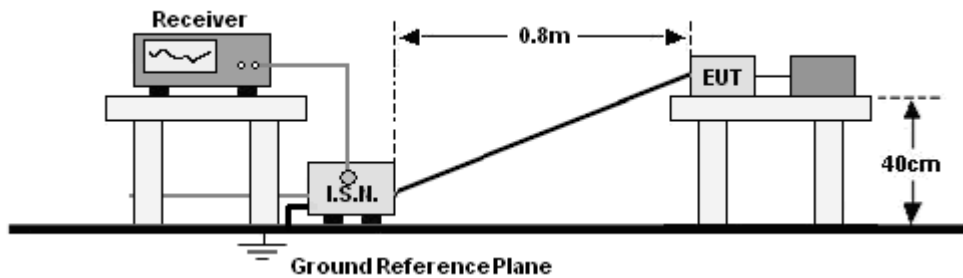
1. All readings are Quasi-Peak and Average values.
2. Factor = Insertion Loss + Cable Loss.
3. Measurement = Reading Level + Correct Factor
4. Over = Measurement - Limit

No.	Mk.	Freq.	Reading Level	Correct Factor	Measurement	Limit	Over	Detector	Comment
		MHz	dB	dB	dBuV	dBuV	dB		
1		0.1635	40.05	10.23	50.28	65.28	-15.00	QP	
2		0.1635	22.57	10.23	32.80	55.28	-22.48	AVG	
3		0.1814	37.62	10.24	47.86	64.42	-16.56	QP	
4		0.1814	19.75	10.24	29.99	54.42	-24.43	AVG	
5		1.4144	22.37	10.17	32.54	56.00	-23.46	QP	
6		1.4144	8.63	10.17	18.80	46.00	-27.20	AVG	
7		6.9539	25.57	10.38	35.95	60.00	-24.05	QP	
8		6.9539	10.69	10.38	21.07	50.00	-28.93	AVG	
9		11.4629	28.73	10.39	39.12	60.00	-20.88	QP	
10		11.4629	19.19	10.39	29.58	50.00	-20.42	AVG	
11		18.2443	28.74	10.50	39.24	60.00	-20.76	QP	
12	*	18.2443	24.75	10.50	35.25	50.00	-14.75	AVG	

## 7. Asymmetric mode conducted emissions

### 7.1 Block Diagram Of Test Setup

For asymmetric mode ports:



### 7.2 Limit

Limits for asymmetric mode conducted emissions of Class B MME

Frequency range (MHz)	Limits dB(μV)	
	Quasi-peak	Average
0,15 to 0,50	84-74*	74-64*
0,50 to 30	74	64

Notes: \*Decreasing linearly with logarithm of frequency.

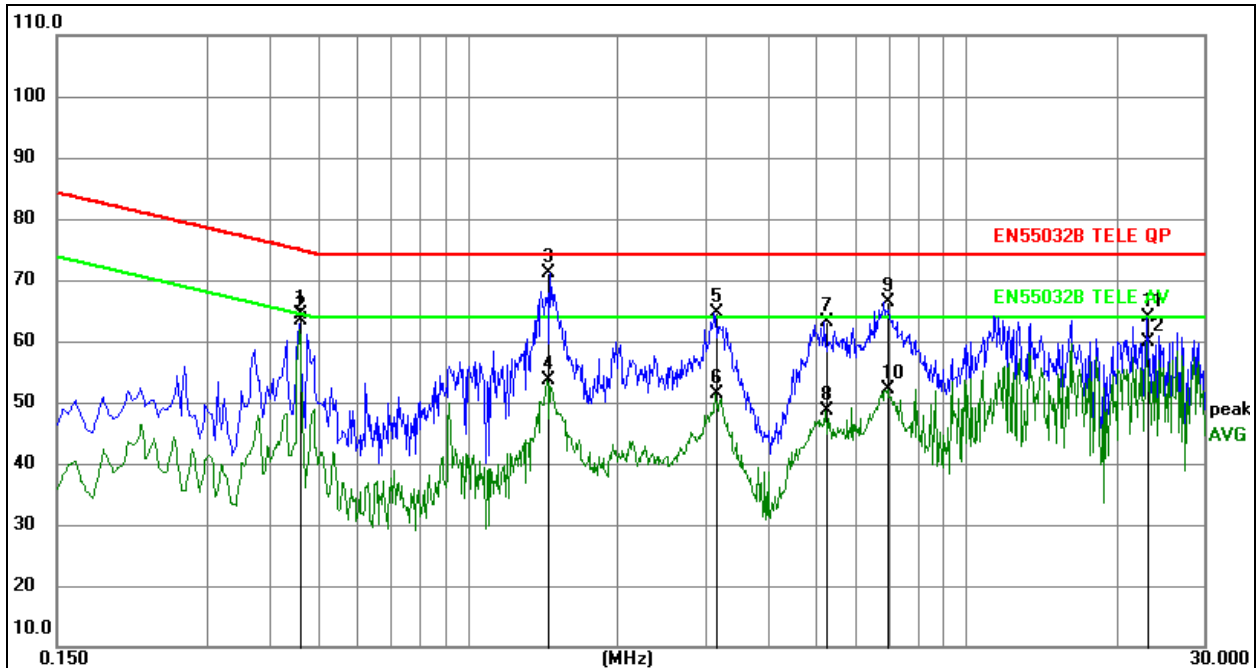
### 7.3 Test procedure

**For asymmetric mode ports:**

- The Product was placed on a non-conductive table 0.8 m above the horizontal ground reference plane, and 0.4 m from the vertical ground reference plane, and connected to the associated port through voltage probe.
- The RBW of the receiver was set at 9 kHz in 150 kHz ~ 30MHz with Peak and AVG detector in Max Hold mode. Run the receiver's pre-scan to record the maximum disturbance generated from Product in all power lines in the full band.
- For each frequency whose maximum record was higher or close to limit, measure its QP and AVG values and record.

### 7.4 Test Result

Temperature:	26 °C	Relative Humidity:	54%
Pressure:	101kPa	Phase :	/
Test Voltage :	AC 230V/50Hz	Test Mode:	Mode 1



**Remark:**

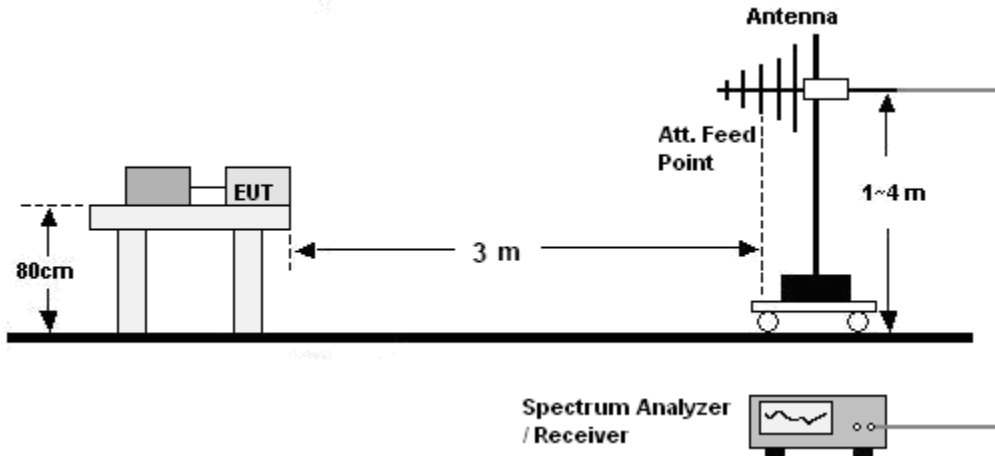
1. All readings are Quasi-Peak and Average values.
2. Factor = Insertion Loss + Cable Loss.

No. Mk.	Freq.	Reading Level	Correct Factor	Measurement	Limit	Over	Detector	Comment
	MHz	dB	dB	dBuV	dBuV	dB		
1	0.4605	54.66	9.60	64.26	74.68	-10.42	QP	
2 *	0.4605	53.76	9.60	63.36	64.68	-1.32	AVG	
3	1.4460	61.43	9.71	71.14	74.00	-2.86	QP	
4	1.4460	43.80	9.71	53.51	64.00	-10.49	AVG	
5	3.1560	55.06	9.67	64.73	74.00	-9.27	QP	
6	3.1560	41.64	9.67	51.31	64.00	-12.69	AVG	
7	5.2350	53.45	9.69	63.14	74.00	-10.86	QP	
8	5.2350	38.86	9.69	48.55	64.00	-15.45	AVG	
9	6.9630	56.50	9.95	66.45	74.00	-7.55	QP	
10	6.9630	42.13	9.95	52.08	64.00	-11.92	AVG	
11	23.1270	53.85	10.08	63.93	74.00	-10.07	QP	
12	23.1270	49.71	10.08	59.79	64.00	-4.21	AVG	

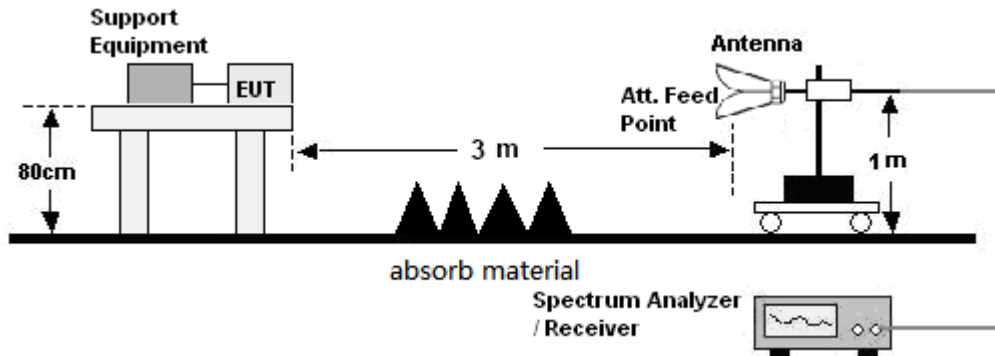
## 8. Radiated Emissions Test

### 8.1 Block Diagram Of Test Setup

30MHz ~ 1GHz:



Above 1GHz:



### 8.2 Limits

Limits for radiated disturbance of Class B MME

Frequency (MHz)	Quasi-peak limits at 3m dB( $\mu$ V/m)	
30-230	40	
230-1000	47	
Frequency (GHz)	limit above 1G at 3m dB( $\mu$ V/m)	
	Average	peak
1-3	50	70
3-6	54	74

**Note:** The lower limit shall apply at the transition frequencies.

### 8.3 Test Procedure

#### 30MHz ~ 1GHz:

- a. The Product was placed on the nonconductive turntable 0.8m above the ground in a semi anechoic chamber.
- b. Set the spectrum analyzer/receiver in Peak detector, Max Hold mode, and 120 kHz RBW. Record the maximum field strength of all the pre-scan process in the full band when the antenna is varied between 1~4 m in both horizontal and vertical, and the turntable is rotated from 0 to 360 degrees.
- c. For each frequency whose maximum record was higher or close to limit, measure its QP value: vary the antenna's height and rotate the turntable from 0 to 360 degrees to find the height and degree where Product radiated the maximum emission, then set the test frequency analyzer/receiver to QP Detector and specified bandwidth with Maximum Hold Mode, and record the maximum value.

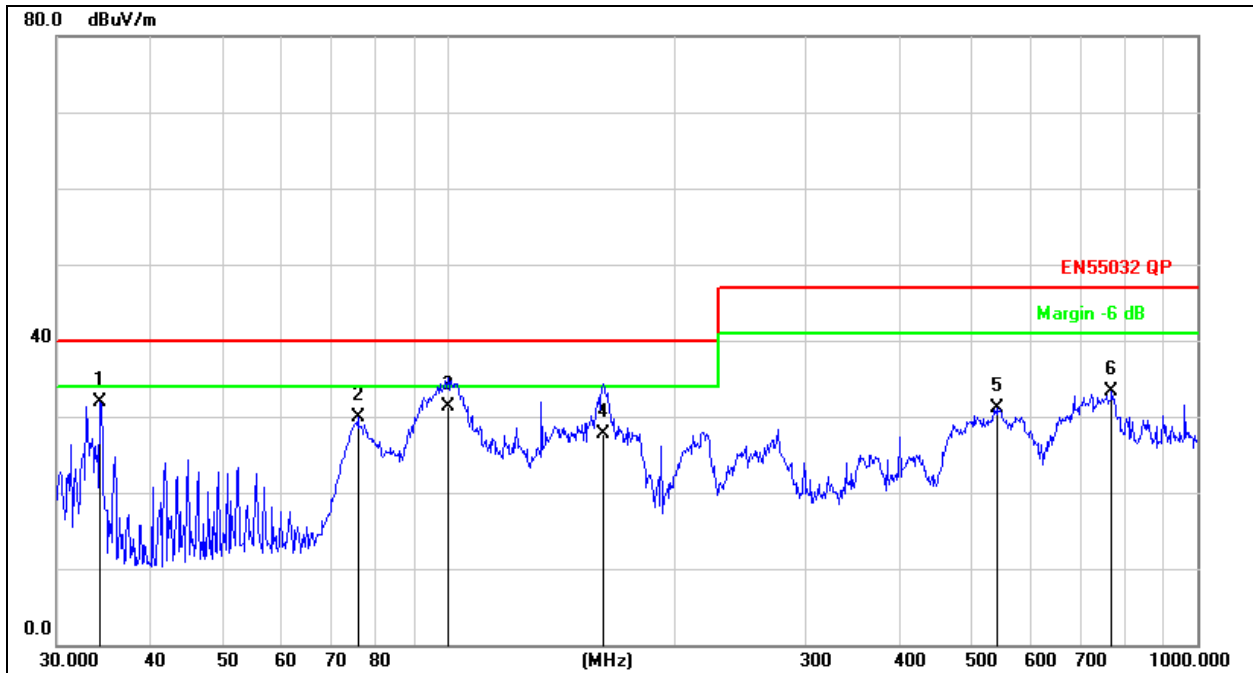
#### Above 1GHz:

- a. The Product was placed on the non-conductive turntable 0.8 m above the ground in a full anechoic chamber..
- b. Set the spectrum analyzer/receiver in Peak detector, Max Hold mode, and 1MHz RBW. Record the maximum field strength of all the pre-scan process in the full band when the antenna is varied in both horizontal and vertical, and the turntable is rotated from 0 to 360 degrees.
- c. For each frequency whose maximum record was higher or close to limit, measure its AV value: rotate the turntable from 0 to 360 degrees to find the degree where Product radiated the maximum emission, then set the test frequency analyzer/receiver to AV value and specified bandwidth with Maximum Hold Mode, and record the maximum value.

### 8.4 Test Results

Below 1GHz

Temperature:	26 °C	Relative Humidity:	54%
Pressure:	101KPa	Phase :	Horizontal
Test Mode:	Mode 1	Test Voltage :	AC 230V/50Hz

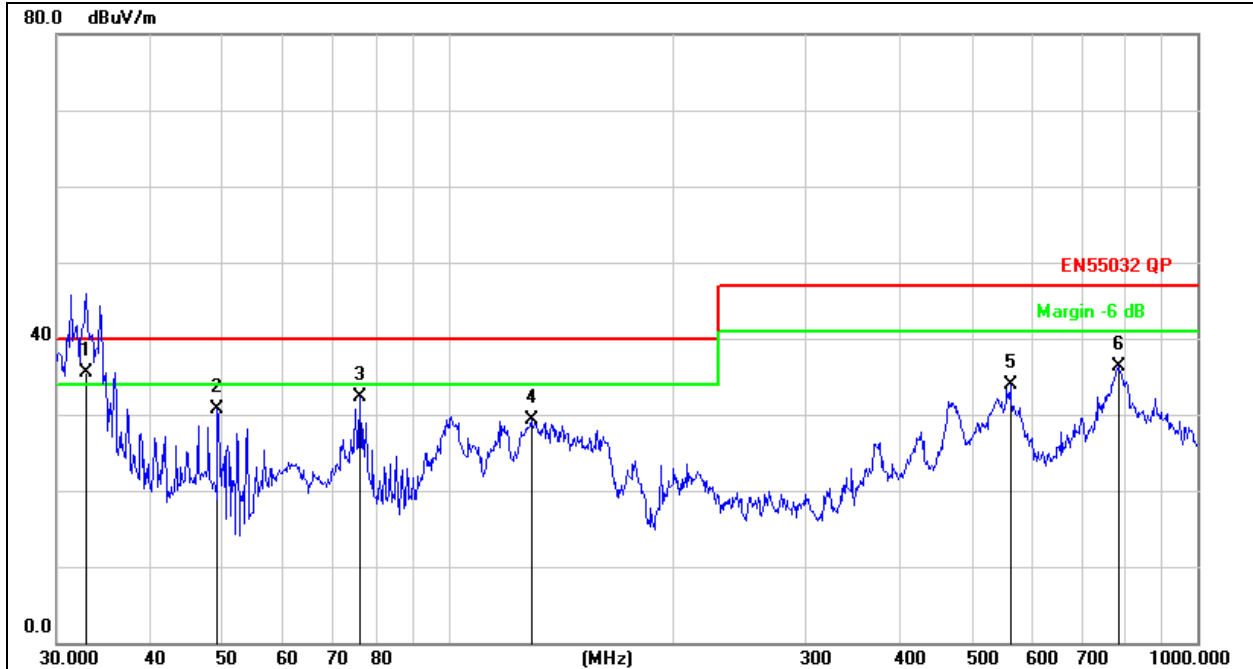


Remark:

1. Factor = Antenna Factor + Cable Loss – Pre-amplifier.
2. Measurement = Reading Level + Correct Factor
3. Over = Measurement - Limit

No.	Mk.	Freq.	Reading Level	Correct Factor	Measurement	Limit	Over	Antenna Height	Table Degree	
		MHz	dBuV	dB	dBuV/m	dB/m	dB	cm	degree	Comment
1	*	34.2760	40.18	-8.29	31.89	40.00	-8.11			QP
2		75.7114	41.27	-11.35	29.92	40.00	-10.08			QP
3		99.8777	41.37	-9.97	31.40	40.00	-8.60			QP
4		160.9089	34.09	-6.39	27.70	40.00	-12.30			QP
5		541.3725	30.94	0.20	31.14	47.00	-15.86			QP
6		768.7481	28.73	4.67	33.40	47.00	-13.60			QP

Temperature:	26 °C	Relative Humidity:	54%
Pressure:	101KPa	Phase :	Vertical
Test Mode:	Mode 1	Test Voltage :	AC 230V/50Hz


**Remark:**

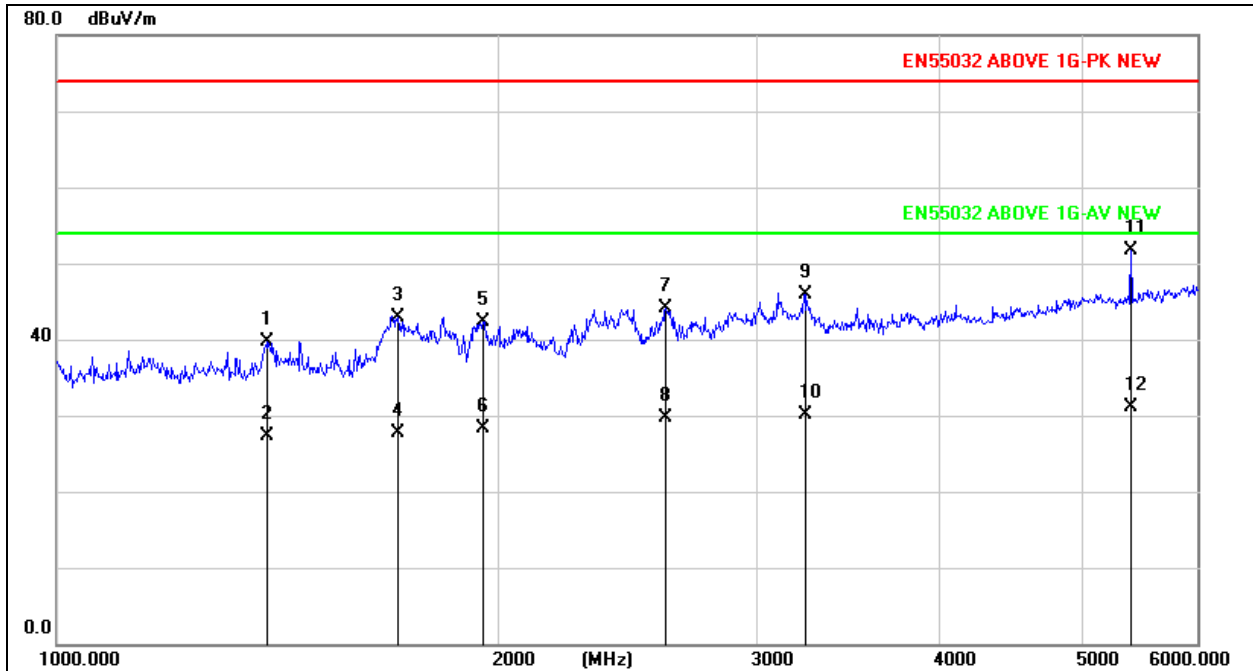
- Factor = Antenna Factor + Cable Loss – Pre-amplifier.
- Measurement = Reading Level + Correct Factor
- Over = Measurement - Limit

No.	Mk.	Freq.	Reading Level	Correct Factor	Measurement	Limit	Over	Antenna Height	Table Degree	Detector	Comment
		MHz	dBuV	dB	dBuV/m	dBm	dB	cm	degree		
1	*	32.8637	43.85	-8.25	35.60	40.00	-4.40			QP	
2		49.1865	39.67	-9.00	30.67	40.00	-9.33			QP	
3		76.2442	43.77	-11.39	32.38	40.00	-7.62			QP	
4		129.0146	36.64	-7.41	29.23	40.00	-10.77			QP	
5		562.6624	33.17	0.67	33.84	47.00	-13.16			QP	
6		785.0934	31.48	4.75	36.23	47.00	-10.77			QP	

C T  
 30  
 PPR  
 检测

Above 1GHz

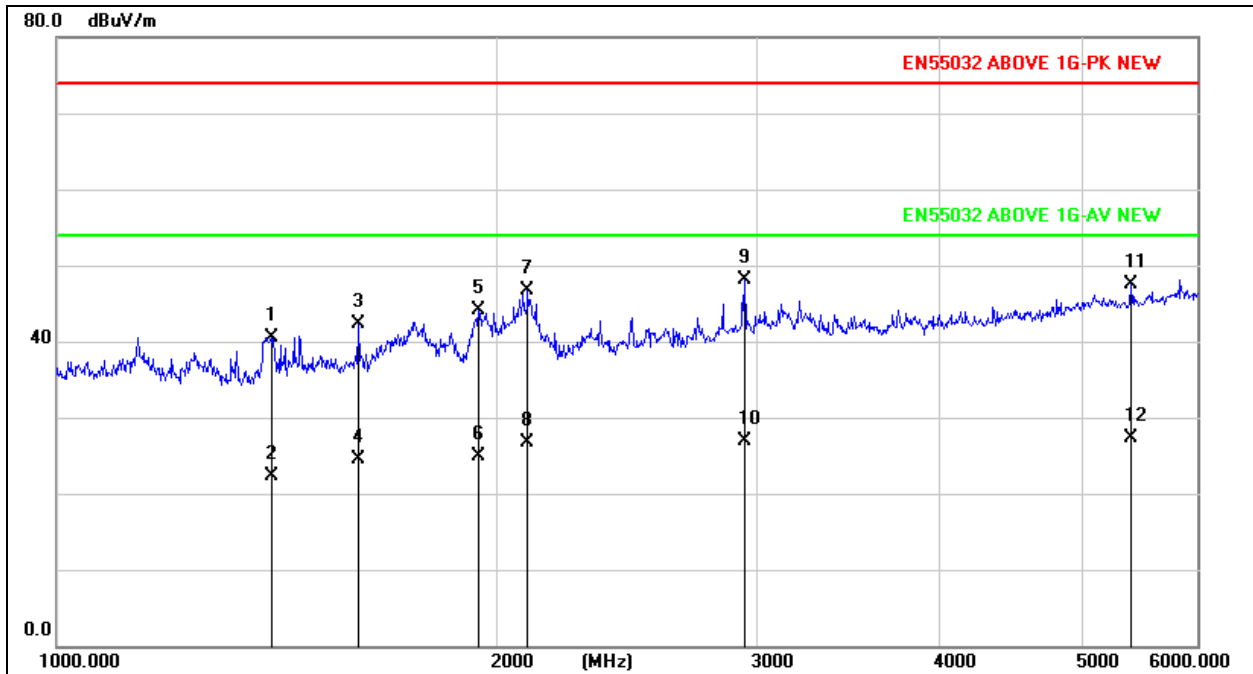
Temperature:	26 °C	Relative Humidity:	54%
Pressure:	101KPa	Phase :	Horizontal
Test Mode:	Mode 1	Test Voltage :	AC 230V/50Hz


**Remark:**

- Factor = Antenna Factor + Cable Loss – Pre-amplifier.
- Measurement = Reading Level + Correct Factor
- Over = Measurement - Limit

No.	Mk.	Freq.	Reading Level	Correct Factor	Measurement	Limit	Over	Antenna Height	Table Degree	
		MHz	dBuV	dB	dBuV/m	dB/m	dB	cm	degree	Comment
1		1393.022	59.30	-19.67	39.63	74.00	-34.37			peak
2		1393.022	46.97	-19.67	27.30	54.00	-26.70			AVG
3		1708.706	61.84	-19.01	42.83	74.00	-31.17			peak
4		1708.706	46.63	-19.01	27.62	54.00	-26.38			AVG
5		1954.468	60.79	-18.50	42.29	74.00	-31.71			peak
6		1954.468	46.83	-18.50	28.33	54.00	-25.67			AVG
7		2603.351	59.81	-15.75	44.06	74.00	-29.94			peak
8		2603.351	45.40	-15.75	29.65	54.00	-24.35			AVG
9		3239.420	59.31	-13.45	45.86	74.00	-28.14			peak
10		3239.420	43.55	-13.45	30.10	54.00	-23.90			AVG
11	*	5407.773	60.01	-8.27	51.74	74.00	-22.26			peak
12		5407.773	39.47	-8.27	31.20	54.00	-22.80			AVG

Temperature:	26 °C	Relative Humidity:	54%
Pressure:	101KPa	Phase :	Vertical
Test Mode:	Mode 1	Test Voltage :	AC 230V/50Hz

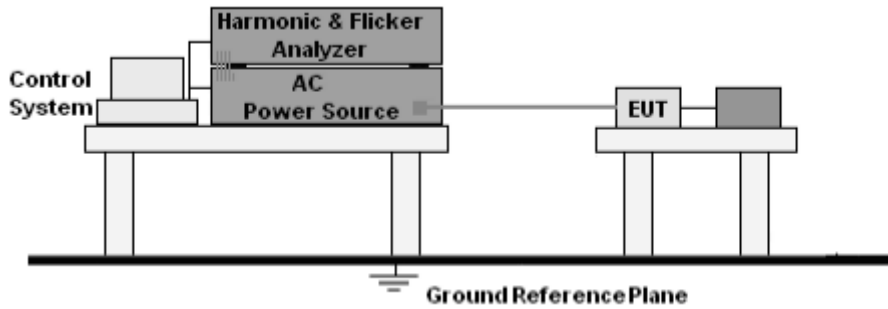


- Remark:
- Factor = Antenna Factor + Cable Loss – Pre-amplifier.
  - Measurement = Reading Level + Correct Factor
  - Over = Measurement - Limit

No. Mk.	Freq. MHz	Reading Level dBuV	Correct Factor dB	Measure- ment dBuV/m	Limit dB/m	Over dB	Antenna Height cm	Table Degree degree	Detector	Comment
1	1400.530	60.21	-19.66	40.55	74.00	-33.45			peak	
2	1400.530	41.96	-19.66	22.30	54.00	-31.70			AVG	
3	1607.719	61.58	-19.22	42.36	74.00	-31.64			peak	
4	1607.719	43.72	-19.22	24.50	54.00	-29.50			AVG	
5	1940.510	62.54	-18.52	44.02	74.00	-29.98			peak	
6	1940.510	43.42	-18.52	24.90	54.00	-29.10			AVG	
7	2095.928	64.74	-17.98	46.76	74.00	-27.24			peak	
8	2095.928	44.78	-17.98	26.80	54.00	-27.20			AVG	
9 *	2945.949	62.31	-14.24	48.07	74.00	-25.93			peak	
10	2945.949	41.16	-14.24	26.92	54.00	-27.08			AVG	
11	5407.773	55.72	-8.27	47.45	74.00	-26.55			peak	
12	5407.773	35.57	-8.27	27.30	54.00	-26.70			AVG	

## 9. Harmonic current emission(H)

### 9.1 Block Diagram of Test Setup



### 9.2 Limit

EN IEC 61000-3-2:2019

### 9.3 Test Procedure

- The Product was placed on the top of a non-conductive table above the ground and operated to produce the maximum harmonic components under normal operating conditions for each successive harmonic component in turn.
- The correspondent test program of test instrument to measure the current harmonics emanated from Product was chosen. The measure time shall be not less than the time necessary for the Product to be exercised.

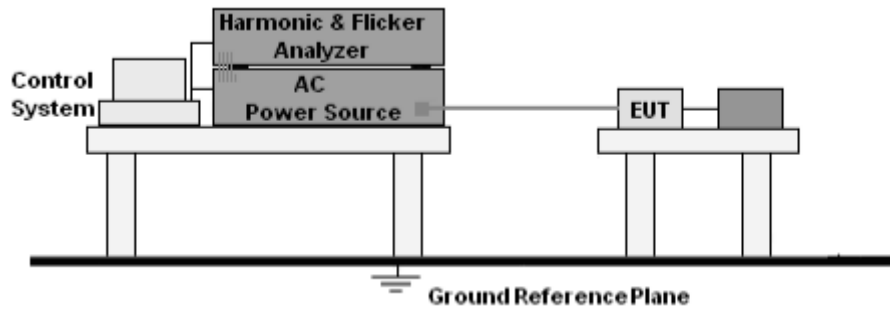
### 9.4 Test Results

#### **Not applicable**

As specified on section 7 and above figure of EN 61000-3-2, the limits are not specified for equipment with a rated power of 75W or less. The EUT meets the above condition, so it conforms to EN 61000-3-2.

## 10. Voltage Fluctuations & Flicker (F)

### 10.1 Block Diagram of Test Setup



### 10.2 Limit

EN 61000-3-3:2013+A1:2019

### 10.3 Test Procedure

- The Product was placed on the top of a non-conductive table above the ground and operated to produce the most unfavorable sequence of voltage changes under normal operating conditions.
- During the flick test, the measure time shall include that part of whole operation cycle in which the Product produce the most unfavorable sequence of voltage changes. The observation period for short-term flicker indicator is 10 minutes and the observation period for long-term flicker indicator is 2 hours.

## 10.4 Test Results

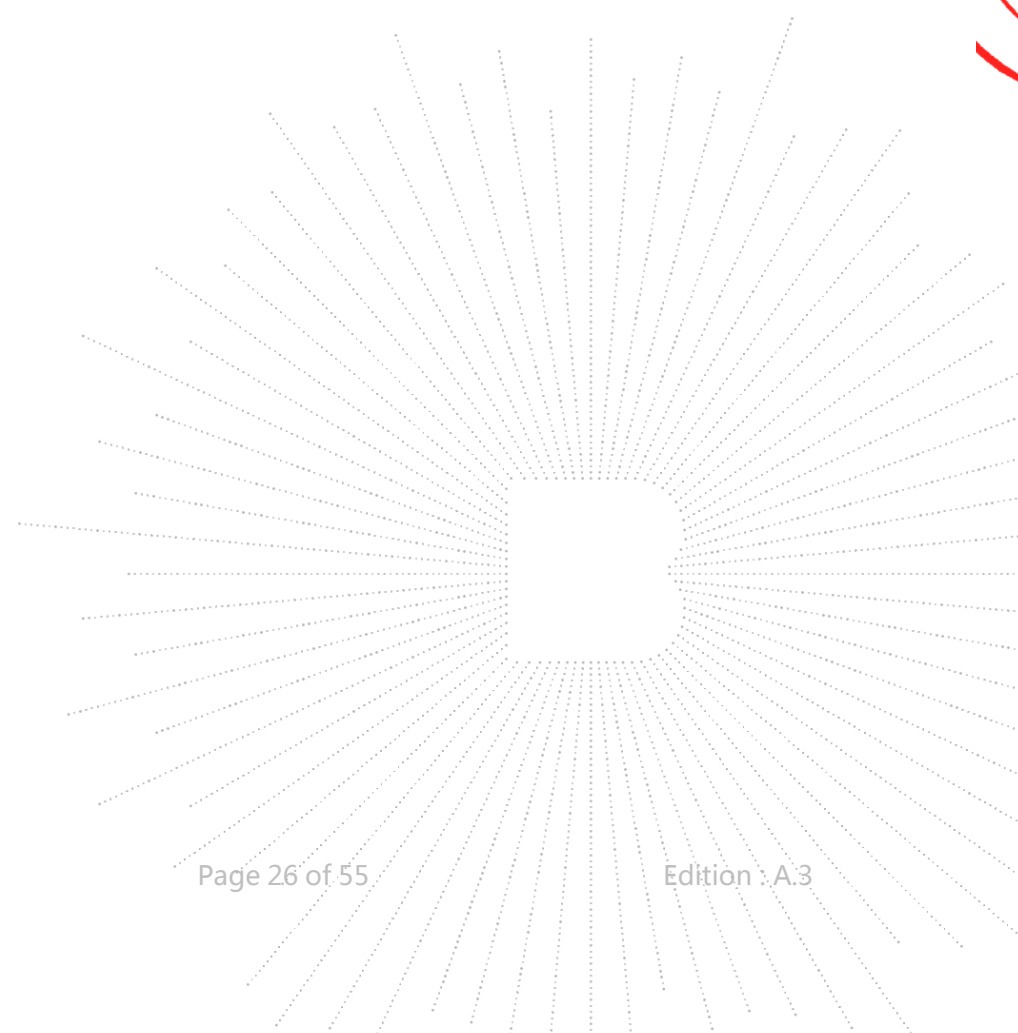
Temperature:	26 °C	Relative Humidity:	54%
Pressure:	101kPa	Test Mode:	Mode 1
Test Voltage :	AC 230V/50Hz		

## Test Data of Voltage Fluctuation and Flicker

Final Test Result **Pass**  
 Nominal Voltage 230 V  
 Nominal Frequency 50 Hz  
 Plt Test Duration 600 s  
 Flicker Margin 100 %  
 d Measurement Margin 100 %

Segment	Pst	dmax(%)	dc(%)	d(t)>3.3%(ms)	Judge
Limit	1.000	4.000	3.300	500	
Seg. 1	0.018	0.017	0.004	0	Pass

Plt	Value	Judge
Limit	0.650	
Measurement	0.008	Pass



## 11. Immunity Test of General the Performance Criteria

According To EN 301489 -17 standard, The General Performance Criteria as Following:

Criteria	During test	After test (i.e. as a result of the application of the test)
A	Shall operate as intended. (see note). Shall be no loss of function. Shall be no unintentional transmissions.	Shall operate as intended. Shall be no degradation of performance. Shall be no loss of function. Shall be no loss of critical stored data.
B	May be loss of function.	Functions shall be self-recoverable. Shall operate as intended after recovering. Shall be no loss of critical stored data.
C	May be loss of function.	Functions shall be recoverable by the operator. Shall operate as intended after recovering. Shall be no loss of critical stored data.
NOTE: Operate as intended during the test allows a level of degradation in accordance with Minimum performance level.		

### Minimum performance level

For equipment that supports a PER or FER, the minimum performance level shall be a PER or FER less than or equal to 10 %.

For equipment that does not support a PER or a FER, the minimum performance level shall be no loss of the wireless transmission function needed for the intended use of the equipment.

### Performance criteria for Continuous phenomena

The performance criteria A shall apply.

Where the EUT is a transmitter in standby mode, unintentional transmission shall not occur during the test.

Where the EUT is a transceiver in receive mode, unintentional transmission shall not occur during the test.

### Performance criteria for Transient phenomena

The performance criteria B shall apply, except for voltage dips greater than or equal to 100 ms and voltage interruptions of 5 000 ms duration, for which performance criteria C shall apply.

Where the EUT is a transmitter in standby mode, unintentional transmission shall not occur as a result of the application of the test.

Where the EUT is a transceiver in receive mode, unintentional transmission shall not occur as a result of the application of the test.

According To EN 301489 -3 standards, The General Performance Criteria as Following:

The performance criteria are used to make an assessment whether a radio equipment passes or fails immunity tests.

Only the performance criteria specified in the present document or in ETSI EN 301 489-1 [1] where referenced shall apply.

The provisions of ETSI EN 301 489-1 [1] clause 6 shall apply, together with clauses 6.2 and 6.3 of the present document.

Continuous and non-continuous operation

Latency is the time delay between the initiation and the completion of operation of the EUT. Correct functioning requires completing the relevant operation within the maximum latency time.

Where the maximum latency is specified in the applicable harmonised radio standard (in the wanted performance criterion, or an acknowledge requirement), that value shall be used.

Where this is not the case, then the maximum latency is that required by the intended use of the EUT.

#### Operating modes

Where the EUT has more than one mode of operation (see clause 4.4.1), an unplanned transition from one mode to another is considered as an unintentional response. The EUT shall be tested in all modes to confirm there are no such unintentional responses.

#### Performance criteria for continuous phenomena

During the test, the equipment shall:

- continue to operate as intended;
- not unintentionally transmit;
- not unintentionally change its operating state;
- not unintentionally change critical stored data.

#### Performance criteria for transient phenomena

For all ports and transient phenomena with the exception described below, the following applies:

- The application of the transient phenomena shall not result in a change of the mode of operation (e.g. unintended transmission) or the loss of critical stored data.
- After application of the transient phenomena, the equipment shall operate as intended.

For surges applied to symmetrically operated wired network ports intended to be connected directly to outdoor lines the following criteria applies:

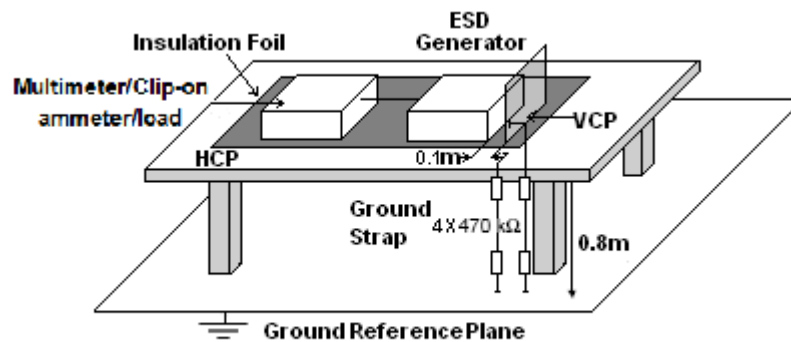
- For products with only one symmetrical port intended for connection to outdoor lines, loss of function is allowed, provided the function is self-recoverable, or can be otherwise restored. Information stored in non-volatile memory, or protected by a battery backup, shall not be lost.
- For products with more than one symmetrical port intended for connection to outdoor lines, loss of function on the port under test is allowed, provided the function is self-recoverable. Information stored in non-volatile memory, or protected by a battery backup, shall not be lost.

## 12. Electrostatic Discharge (ESD)

### 12.1 Test Specification

<b>Test Port</b>	: Enclosure port
<b>Discharge Impedance</b>	: 330 ohm / 150 pF
<b>Discharge Mode</b>	: Single Discharge
<b>Discharge Period</b>	: one second between each discharge

### 12.2 Block Diagram of Test Setup



### 12.3 Test Procedure

- Electrostatic discharges were applied only to those points and surfaces of the Product that are accessible to users during normal operation.
- The test was performed with at least ten single discharges on the pre-selected points in the most sensitive polarity.
- The time interval between two successive single discharges was at least 1 second.
- The ESD generator was held perpendicularly to the surface to which the discharge was applied and the return cable was at least 0.2 meters from the Product.
- Contact discharges were applied to the non-insulating coating, with the pointed tip of the generator penetrating the coating and contacting the conducting substrate.
- Air discharges were applied with the round discharge tip of the discharge electrode approaching the Product as fast as possible (without causing mechanical damage) to touch the Product. After each discharge, the ESD generator was removed from the Product and re-triggered for a new single discharge. The test was repeated until all discharges were complete.

## 12.4 Test Results

Temperature:	26 °C	Relative Humidity:	54%
Pressure:	101kPa	Test Mode:	Mode 1
Test Voltage :	AC 230V/50Hz		

Mode	Air Discharge (Test result)								Contact Discharge (Test result)								Perform Criteria	Result (Pass/Fail)		
	2		4		8		15		2		4		6		8					
Test Location	+	-	+	-	+	-	+	-	+	-	+	-	+	-	+	-	+	-		
HCP									A	A	A	A							TT&TR	PASS
VCP									A	A	A	A							TT&TR	PASS
Slots	A	A	A	A	A	A													TT&TR	PASS
HDMI	A	A	A	A	A	A													TT&TR	PASS
DP, USB	A	A	A	A	A	A													TT&TR	PASS
Conductive Surfaces									A	A	A	A							TT&TR	PASS

## Note:

- 1) P/N denotes the Positive/Negative polarity of the output voltage.
- 2) Test condition:  
 Direct / Indirect (HCP/VCP) discharges: Minimum 50 times (Positive/Negative) at each point.  
 Air discharges: Minimum 10 times (Positive/Negative) at each point.
- 3) N/A - denotes test is not applicable in this test report
- 4) There was not any unintentional transmission in standby mode

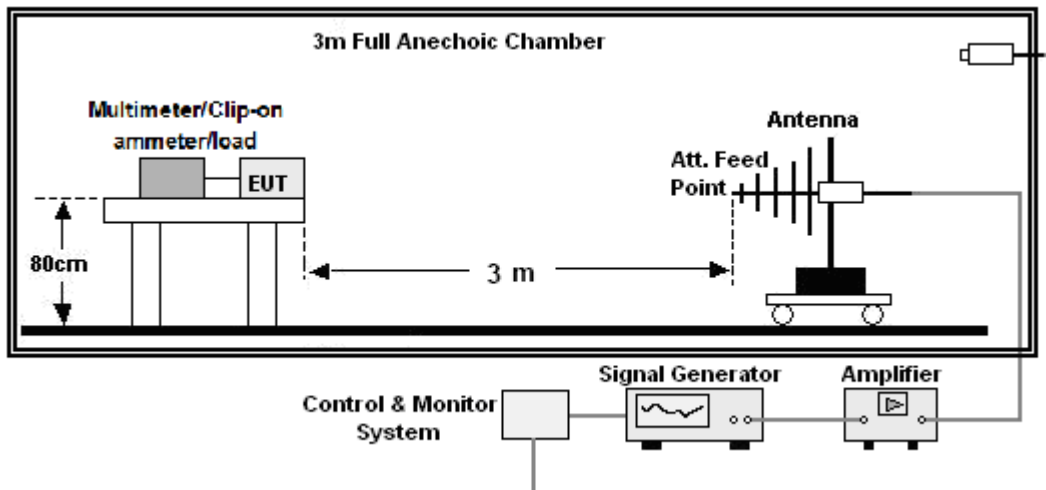
### 13. Continuous RF Electromagnetic Field Disturbances(RS)

#### 13.1 Test Specification

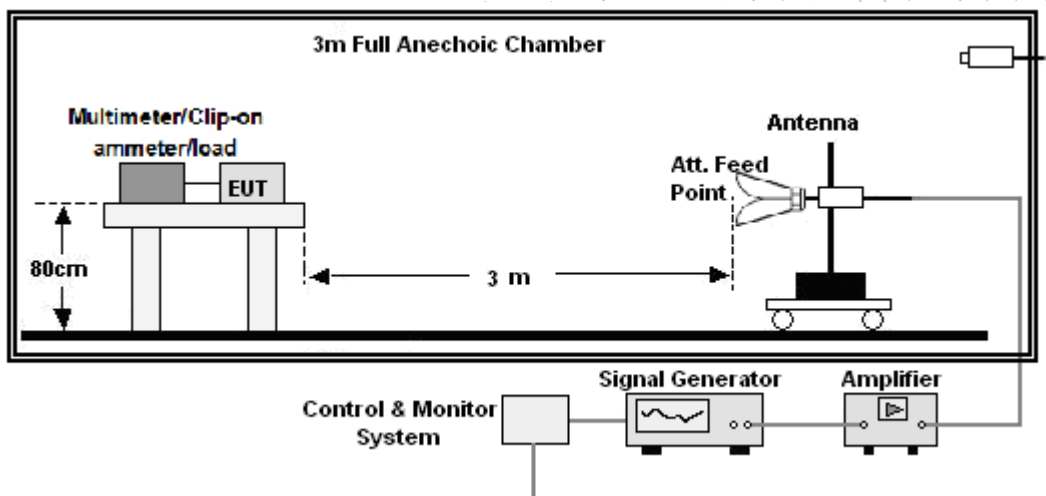
<b>Test Port</b>	:	Enclosure port
<b>Step Size</b>	:	1%
<b>Modulation</b>	:	1kHz, 80% AM
<b>Dwell Time</b>	:	1 second
<b>Polarization</b>	:	Horizontal & Vertical

#### 13.2 Block Diagram of Test Setup

Below 1GHz:



Above 1GHz:



SHENZHEN

### 13.3 Test Procedure

- a. The testing was performed in a fully-anechoic chamber. The transmit antenna was located at a distance of 3 meters from the Product.
- b. The frequency range is swept from 80MHz to 6000MHz, with the signal 80% amplitude modulated with a 1 kHz sine wave, and the step size was 1%.
- c. The dwell time at each frequency shall not be less than the time necessary for the EUT to be exercised and to be able to respond, but should not exceed 5 s at each of the frequencies during the scan.
- d. The test was performed with the Product exposed to both vertically and horizontally polarized fields on each of the four sides.
- e. For Broadcast reception function: Group 2 not apply in this test.

### 13.4 Test Results

Temperature:	26 °C	Relative Humidity:	54%
Pressure:	101kPa	Test Mode:	Mode 1
Test Voltage :	AC 230V/50Hz		

Frequency Range (MHz)	RF Field Position	R.F.Field Strength	Azimuth	Perform Criteria	Test Result	Result (Pass/Fail)
80~6000	H / V	3 V/m (rms) AM Modulated 1000Hz, 80%	Front	CT&CR	A	PASS
			Rear			
			Left			
			Right			

**Note:**

- 1) P/N denotes the Positive/Negative polarity of the output voltage.
- 2) N/A - denotes test is not applicable in this test report.
- 3) There was no change operated with initial operating during the test.
- 4) There was not any unintentional transmission in standby mode



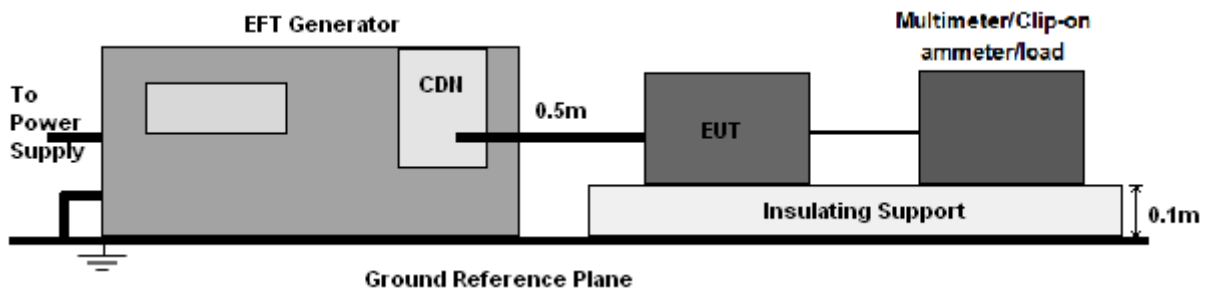
## 14. Electrical fast transients/burst (EFT)

### 14.1 Test Specification

<b>Test Port</b>	: input AC power port
<b>Impulse Frequency</b>	: 5 kHz
<b>Impulse Wave-shape</b>	: 5/50 ns
<b>Burst Duration</b>	: 15 ms
<b>Burst Period</b>	: 300 ms
<b>Test Duration</b>	: 2 minutes per polarity

### 14.2 Block Diagram of EUT Test Setup

For input AC power port:



### 14.3 Test Procedure

- The Product and support units were located on a non-conductive table above ground reference plane.
- A 0.5m-long power cord was attached to Product during the test.

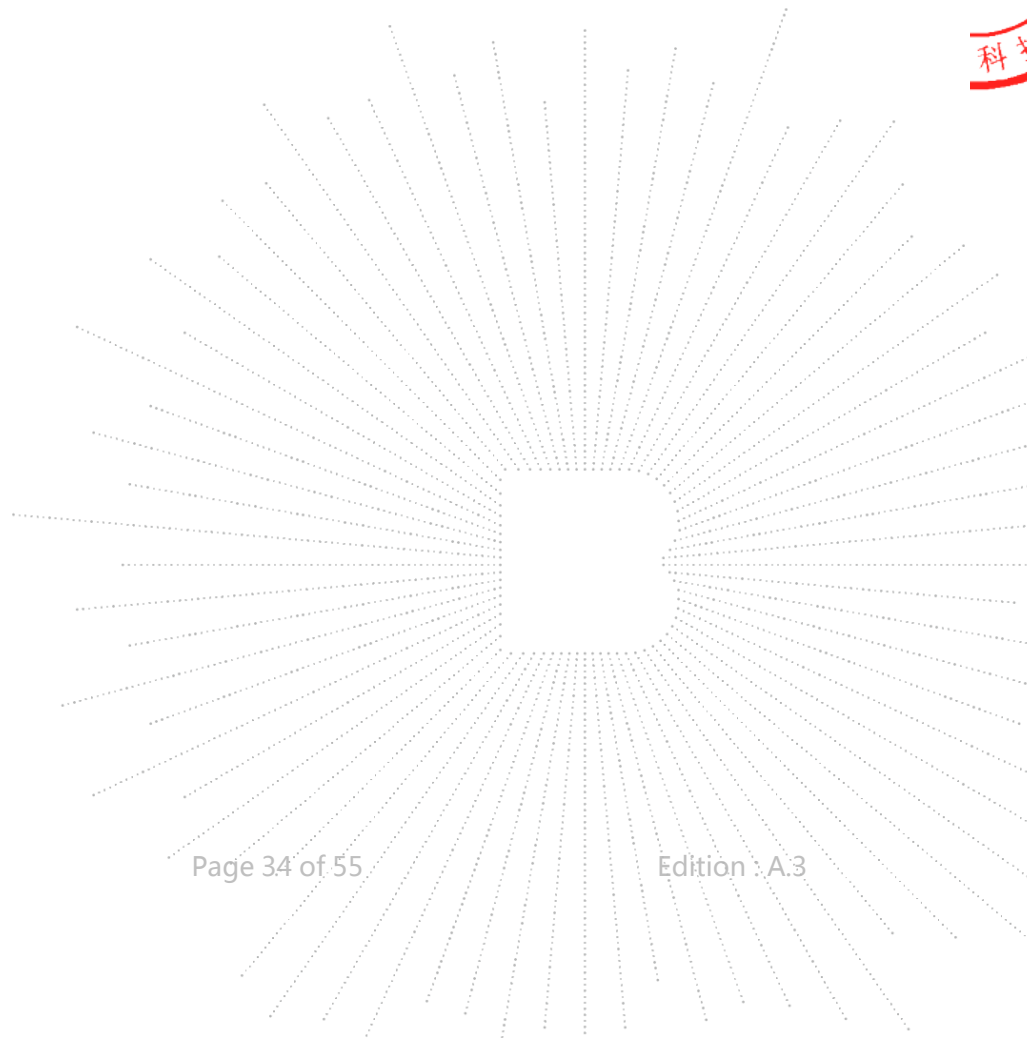
## 14.4 Test Results

Temperature:	26 °C	Relative Humidity:	54%
Pressure:	101kPa	Test Mode:	Mode 1
Test Voltage :	AC 230V/50Hz		

Injection Line	Voltage (kV)	Injected Method	Actual criterion	Required performance criterion	Result (Pass/Fail)
<input checked="" type="checkbox"/> AC mains power ports	± 1	<input checked="" type="checkbox"/> CDN <input type="checkbox"/> Direct injection <input type="checkbox"/> Capacitive coupling clamp	A (CT&CR)	B	Pass
<input checked="" type="checkbox"/> Signal Line	±0.5	<input type="checkbox"/> CDN <input type="checkbox"/> Direct injection <input checked="" type="checkbox"/> Capacitive coupling clamp	A (CT&CR)	B	Pass

## Note:

- 1) P/N denotes the Positive/Negative polarity of the output voltage.
- 2) N/A - denotes test is not applicable in this test report.
- 3) There was not any unintentional transmission in standby mode
- 4) \*During the test, the product disconnects the charging connection, and the charging connection will be restored automatically after the interference end.

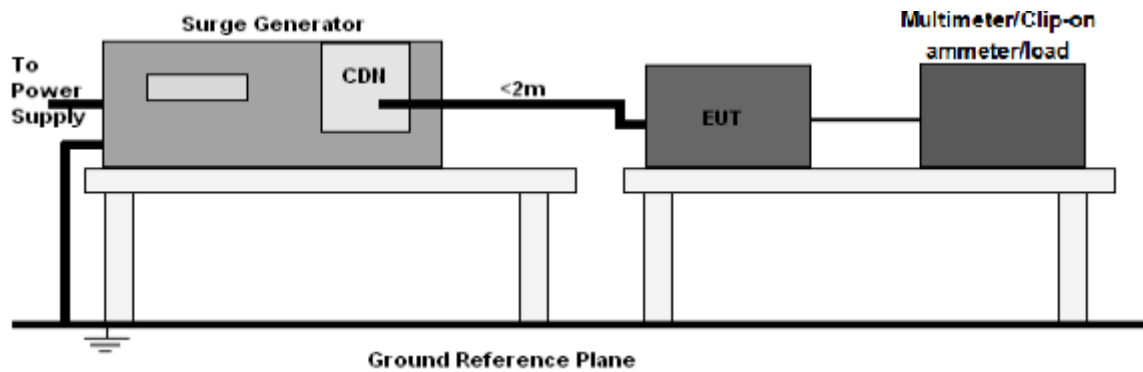
 ECH  
 :TC  
 OVE  
 科


## 15. Surges Immunity Test

### 15.1 Test Specification

<b>Test Port</b>	:	input AC power port
<b>Wave-Shape</b>	:	Open Circuit Voltage - 1.2 / 50 us Short Circuit Current - 8 / 20 us
<b>Pulse Repetition Rate</b>	:	1 pulse / min.
<b>Phase Angle</b>	:	0° / 90° / 180° / 270°
<b>Test Events</b>	:	5 pulses (positive & negative) for each polarity

### 15.2 Block Diagram of EUT Test Setup



### 15.3 Test Procedure

- The surge is to be applied to the Product power supply terminals via the capacitive coupling network. Decoupling networks are required in order to avoid possible adverse effects on equipment not under test that may be powered by the same lines, and to provide sufficient decoupling impedance to the surge wave.
- The power cord between the Product and the coupling/decoupling networks shall be 2 meters in length (or shorter). Interconnection line between the Product and the coupling/decoupling networks shall be 2 meters in length (or shorter).

**15.4 Test Result**

Temperature:	26 °C	Relative Humidity:	54%
Pressure:	101kPa	Test Mode:	Mode 1
Test Voltage :	AC 230V/50Hz		

 AC mains power ports:

Coupling Line	Voltage (kV)	Waveform (µs)	Polarity	Actual criterion	Required performance criterion	Result (Pass/Fail)
<input checked="" type="checkbox"/> Line to line	1	1.2/50 (8/20)	Pos./ Neg.	A (CT&CR)	B	Pass
<input checked="" type="checkbox"/> Line to earth	2	1.2/50 (8/20)	Pos./ Neg.	A (CT&CR)	B	Pass

 Analogue/digital data ports:

Port type	Coupling Line	Voltage (kV)	Waveform (µs)	Polarity	Actual criterion	Required performance criterion	Result (Pass/Fail)
<input checked="" type="checkbox"/> Unshielded symmetrical (Wired network port)	Lines to ground	0.5	1.2/50 (8/20)	Pos./ Neg.	A (CT&CR)	B	Pass
<input type="checkbox"/> Unshielded symmetrical (Signal Line)	Lines to ground	1	10/700 (5/320)	Pos./ Neg.	N/A	B	N/A
<input type="checkbox"/> Unshielded symmetrical	Lines to ground	0.5	10/700 (5/320)	Pos./ Neg.	N/A	B	N/A
<input type="checkbox"/> Coaxial or shielded (.....)	Shield to ground	0.5	1.2/50 (8/20)	Pos./ Neg.	N/A	B	N/A

**Note:**

- 1)Polarity and Numbers of Impulses: 5 Pst / Ngt at each tested mode
- 2) N/A - denotes test is not applicable in this Test Report
- 3) There was not any unintentional transmission in standby mode

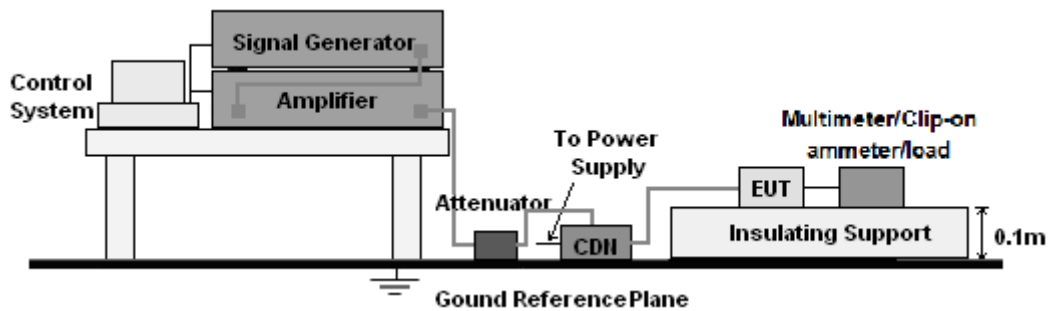
## 16. Continuous Induced RF Disturbances (CS)

### 16.1 Test Specification

<b>Test Port</b>	:	input AC. power port
		analogue/digital data port
<b>Step Size</b>	:	1%
<b>Modulation</b>	:	1kHz, 80% AM
<b>Dwell Time</b>	:	1 second

### 16.2 Block Diagram of EUT Test Setup

For input AC power port:



### 16.3 Test Procedure

For input AC power port:

- The Product and support units were located at a ground reference plane with the interposition of a 0.1 m thickness insulating support and the CDN was located on GRP directly.
- The frequency range is swept from 150 kHz to 10MHz, 10MHz to 30MHz, 30MHz to 80MHz with the signal 80% amplitude modulated with a 1 kHz sine wave, and the step size was 1% of fundamental.
- The dwell time at each frequency shall be not less than the time necessary for the Product to be able to respond.

## 16.4 Test Result

Temperature:	26 °C	Relative Humidity:	54%
Pressure:	101kPa	Test Mode:	Mode 1
Test Voltage :	AC 230V/50Hz		

Range (MHz)	Levers (V)	Injection port	Coupling type	Actual criterion	Required performance criterion	Result (Pass/Fail)
0.15-80	3	<input checked="" type="checkbox"/> AC mains power ports	<input checked="" type="checkbox"/> CDN <input type="checkbox"/> EM Clamp <input type="checkbox"/> Current Clamp <input type="checkbox"/> Direct injection	A (CT&CR)	A	Pass
0.15-80	3	<input type="checkbox"/> DC network power ports	<input type="checkbox"/> CDN <input type="checkbox"/> EM Clamp <input type="checkbox"/> Current Clamp <input type="checkbox"/> Direct injection	N/A	N/A	N/A
0.15-80	3	<input type="checkbox"/> Analogue/digital data ports (Signal Line)	<input type="checkbox"/> CDN <input type="checkbox"/> EM Clamp <input type="checkbox"/> Current Clamp <input type="checkbox"/> Direct injection	N/A	N/A	N/A
0.15-80	3	<input checked="" type="checkbox"/> Analogue/digital data ports (network ports)	<input type="checkbox"/> CDN <input type="checkbox"/> EM Clamp <input checked="" type="checkbox"/> Current Clamp <input type="checkbox"/> Direct injection	A (CT&CR)	N/A	Pass

## Note:

- 1) "A" stand for, during test, operate as intended no loss of function, no degradation of performance, no unintentional transmissions and after test, no degradation of performance, no loss of function, no loss of stored data or user programmable functions

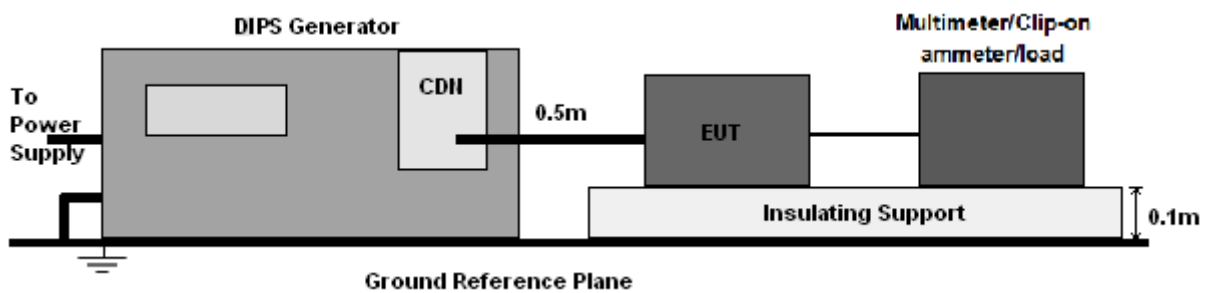


## 17. Voltage dips and interruptions (DIPS)

### 17.1 Test Specification

<b>Test Port</b>	: input AC power port
<b>Phase Angle</b>	: 0°, 180°
<b>Test cycle</b>	: 3 times

### 17.2 Block Diagram of EUT Test Setup



### 17.3 Test Procedure

- The Product and support units were located on a non-conductive table above ground floor.
- Set the parameter of tests and then perform the test software of test simulator.
- Conditions changes to occur at 0 degree crossover point of the voltage waveform.

## 17.4 Test Result

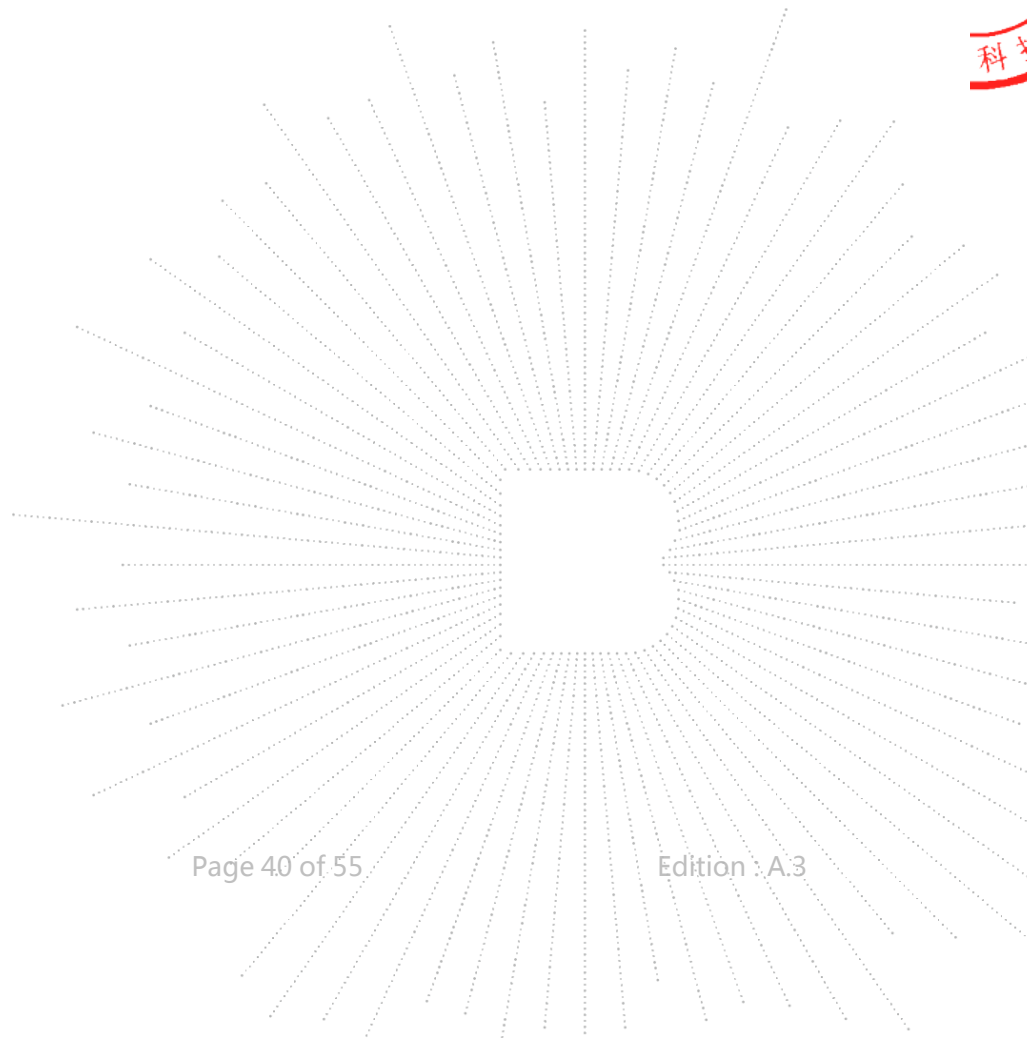
Temperature:	26 °C	Relative Humidity:	54%
Pressure:	101kPa	Test Mode:	Mode 1
Test Voltage :	AC 230V/50Hz		

Voltage Reduction	Duration (ms)	Perform Criteria	Test Result	Judgment
Voltage dip 0%	10	TT&TR	A	PASS
Voltage dip 0%	20	TT&TR	A	PASS
Voltage dip 70%	500	TT&TR	C*	PASS
Voltage interruptions	5000	TT&TR	C*	PASS

## Note:

- 1) There was not any unintentional transmission in standby mode.
- 2) \*:During the test, the product disconnects the charging connection, and the charging connection

ECHA  
BCTC  
OVER  
科学



### 18. EUT Photographs

EUT Photo 1



EUT Photo 2



EUT Photo 3

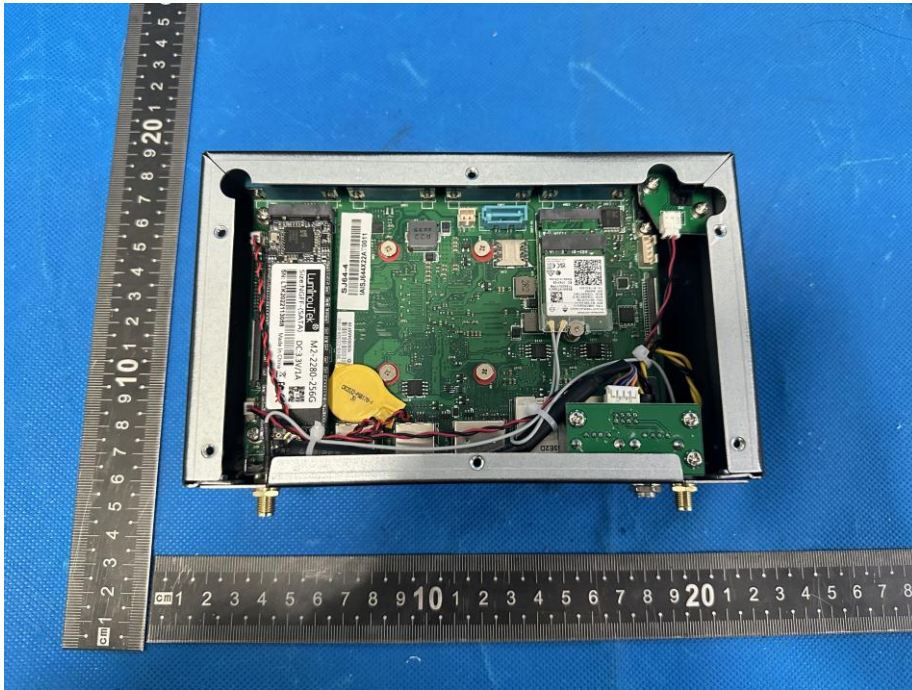


EUT Photo 4

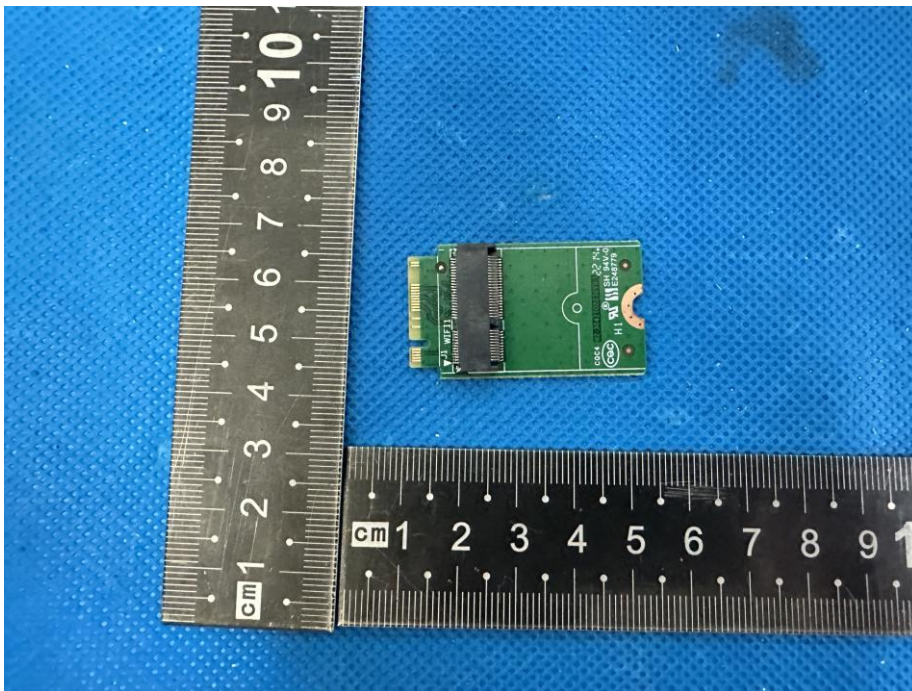


BCTC CO., LTD

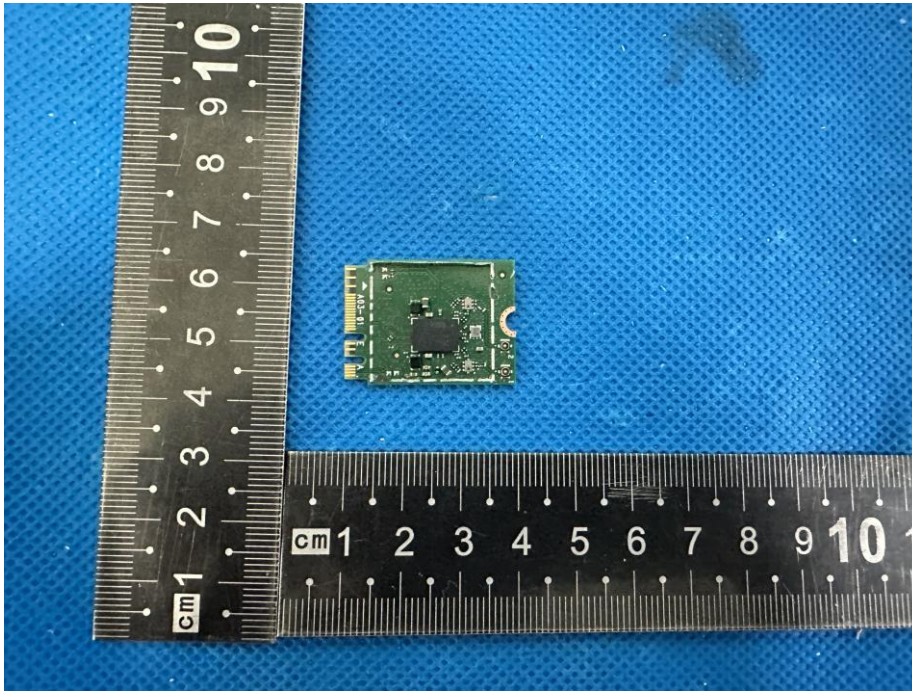
EUT Photo 5



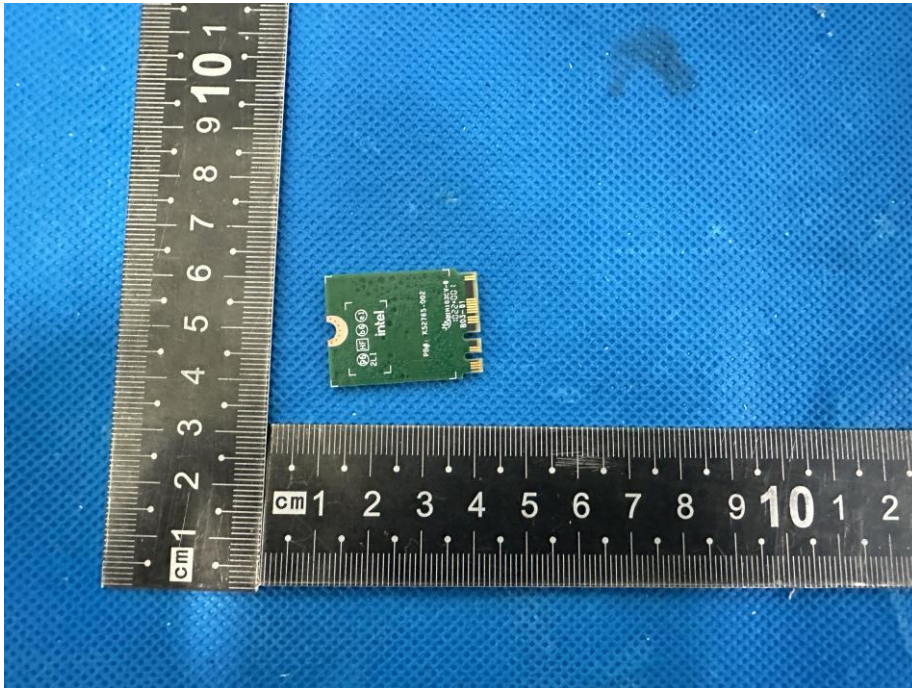
EUT Photo 6



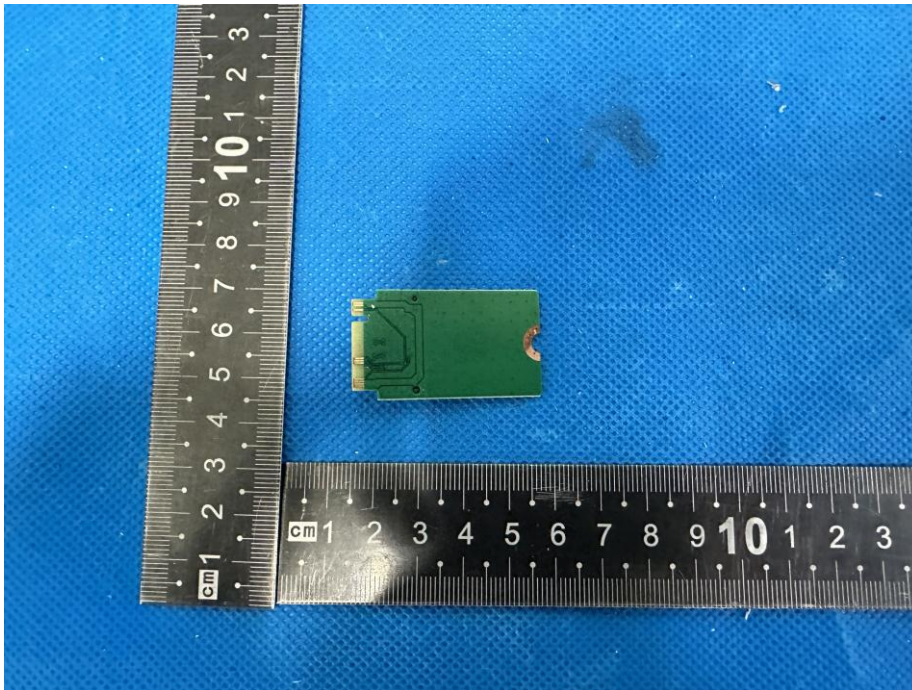
EUT Photo 7



EUT Photo 8



EUT Photo 9



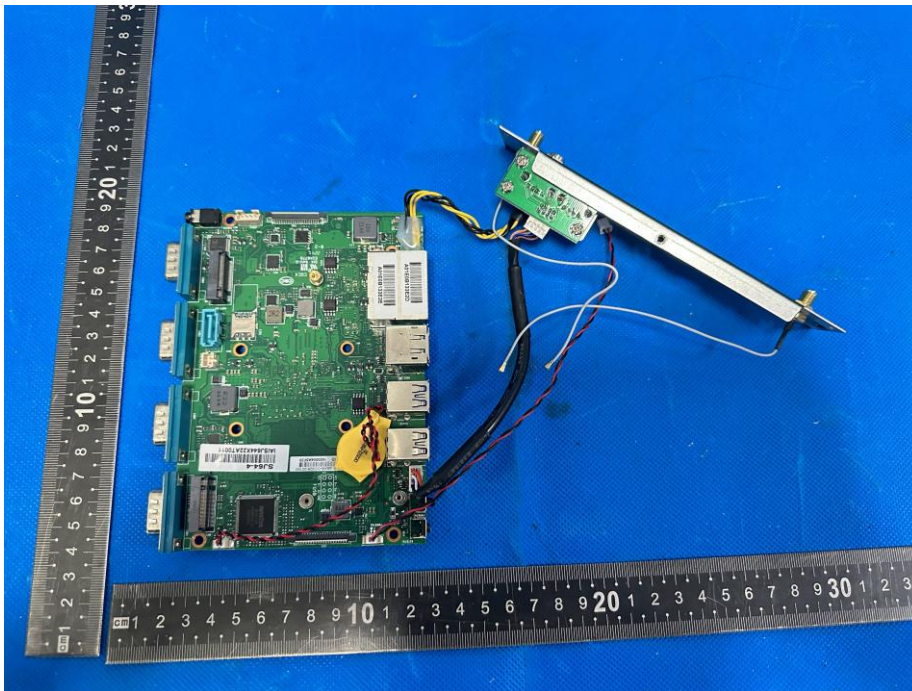
EUT Photo 10



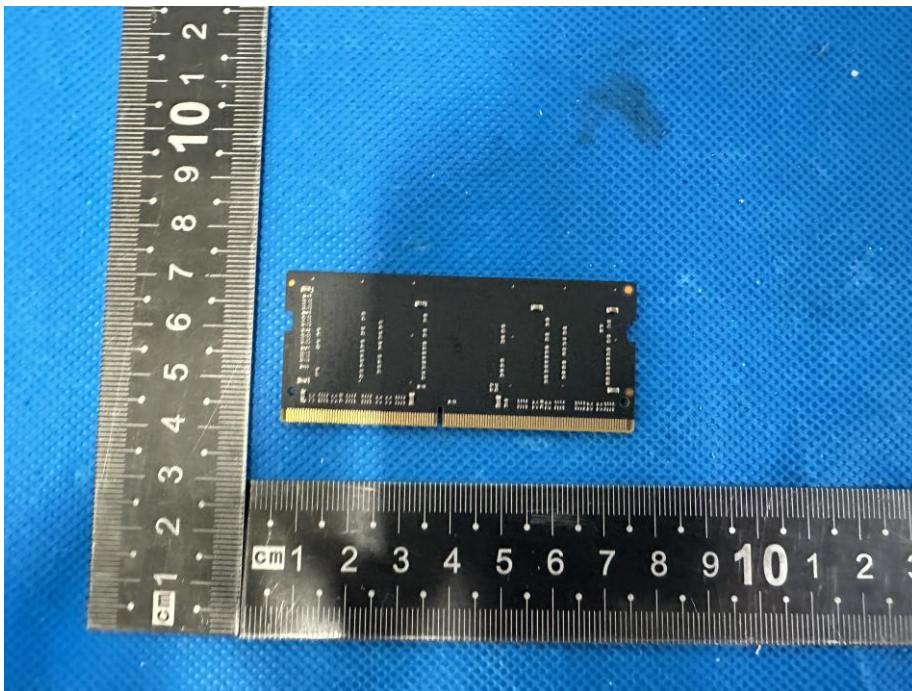
EUT Photo 11

No. : BCTC/RF-EMC-001

C T  
30  
PPR  
检测

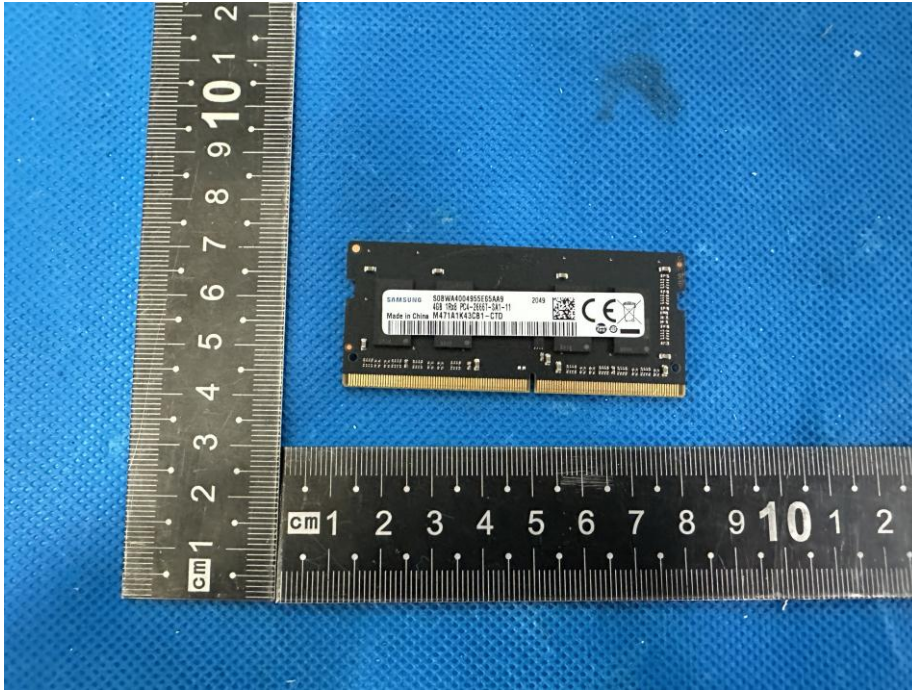


**EUT Photo 12**

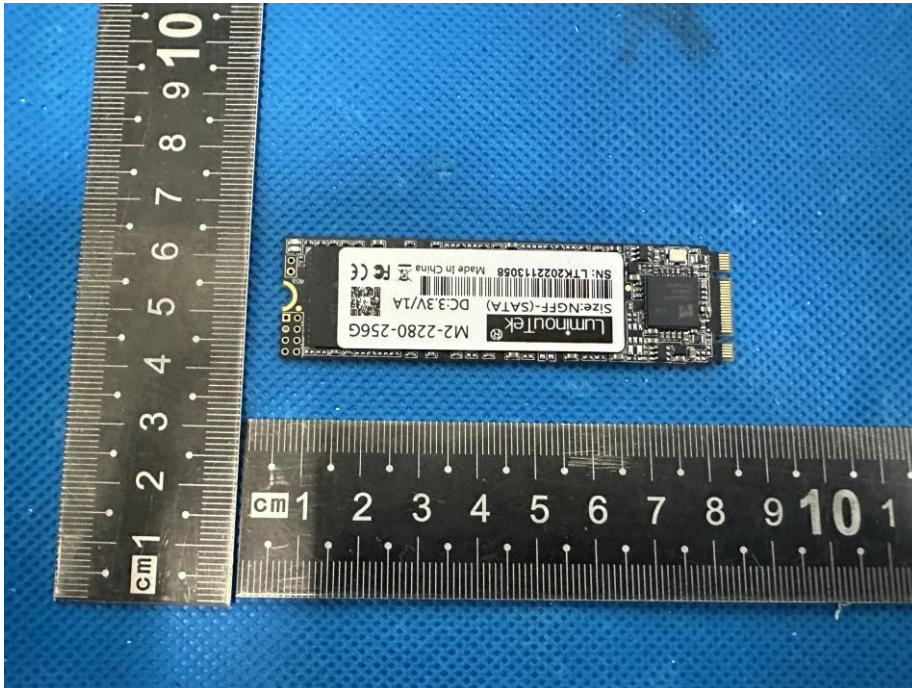


**EUT Photo 13**

ECH  
TC  
OV  
科

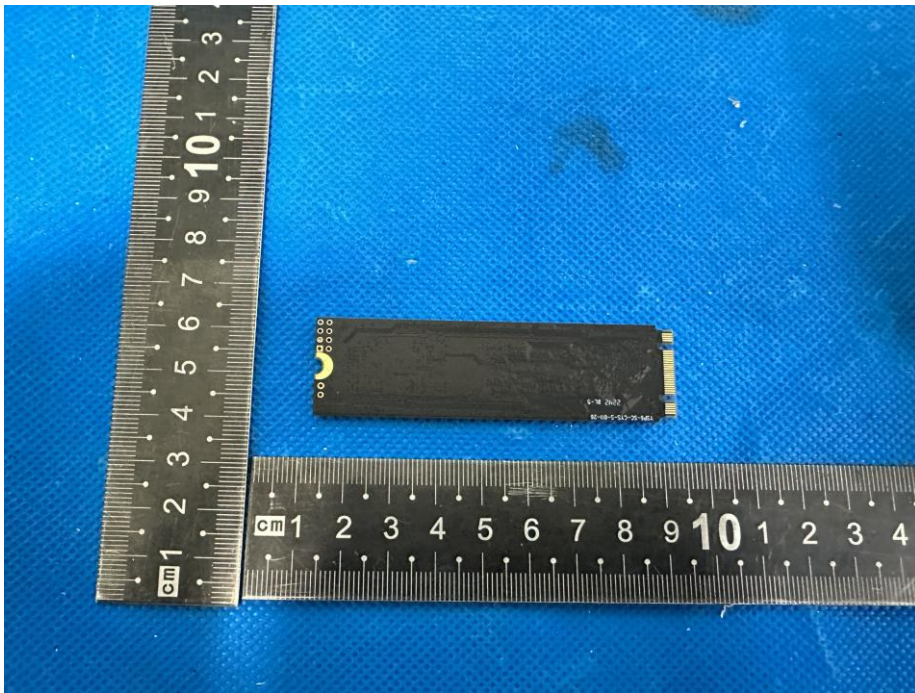


EUT Photo 14

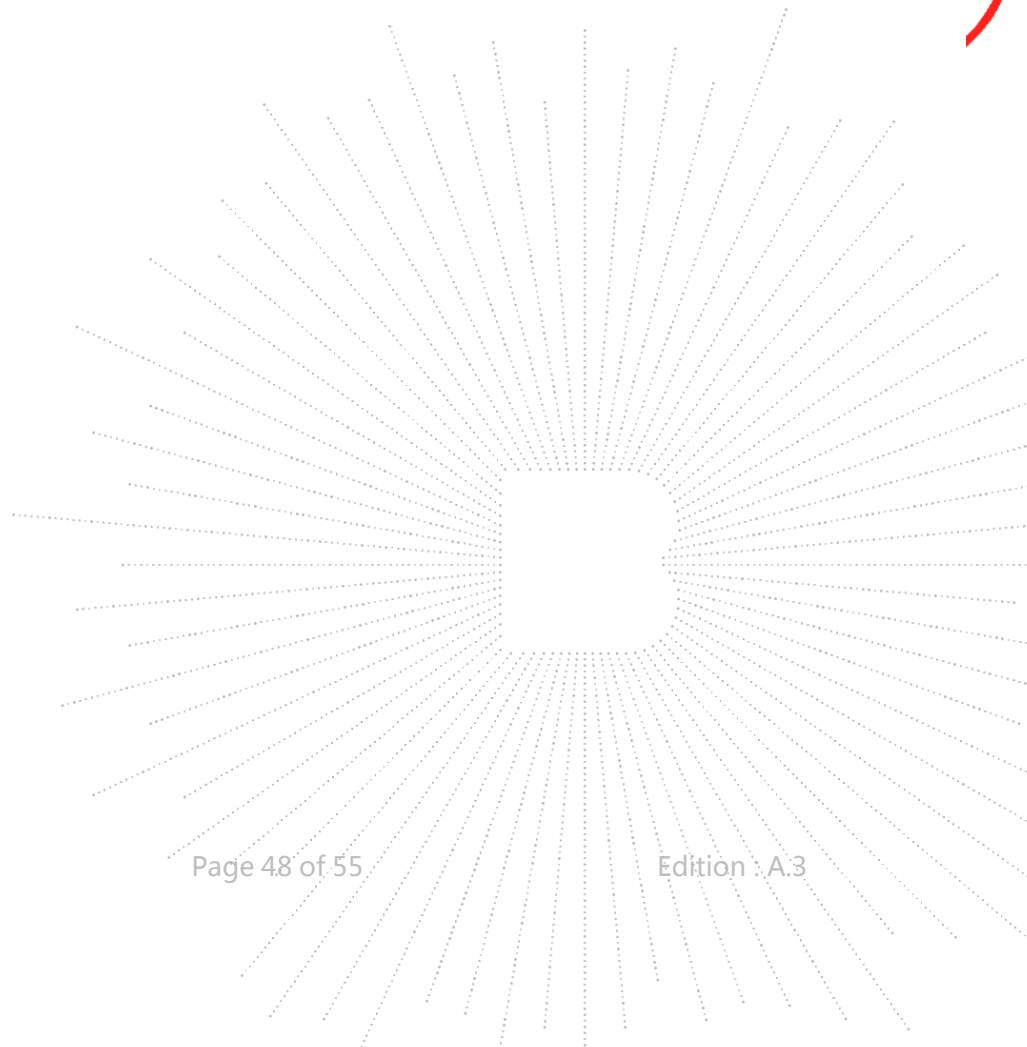


EUT Photo 15





CO., LTD



### 19. EUT Test Setup Photographs

Conducted emissions



Radiated emissions

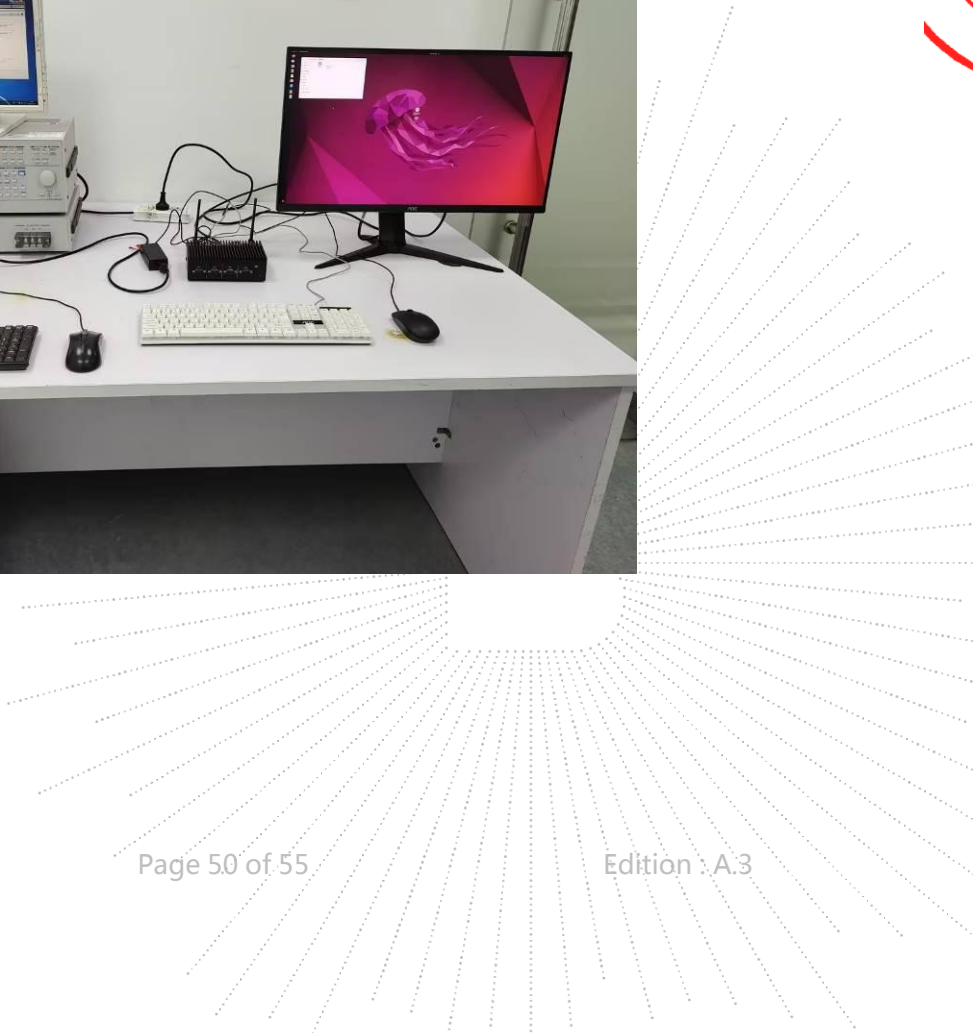




H/F



ESD



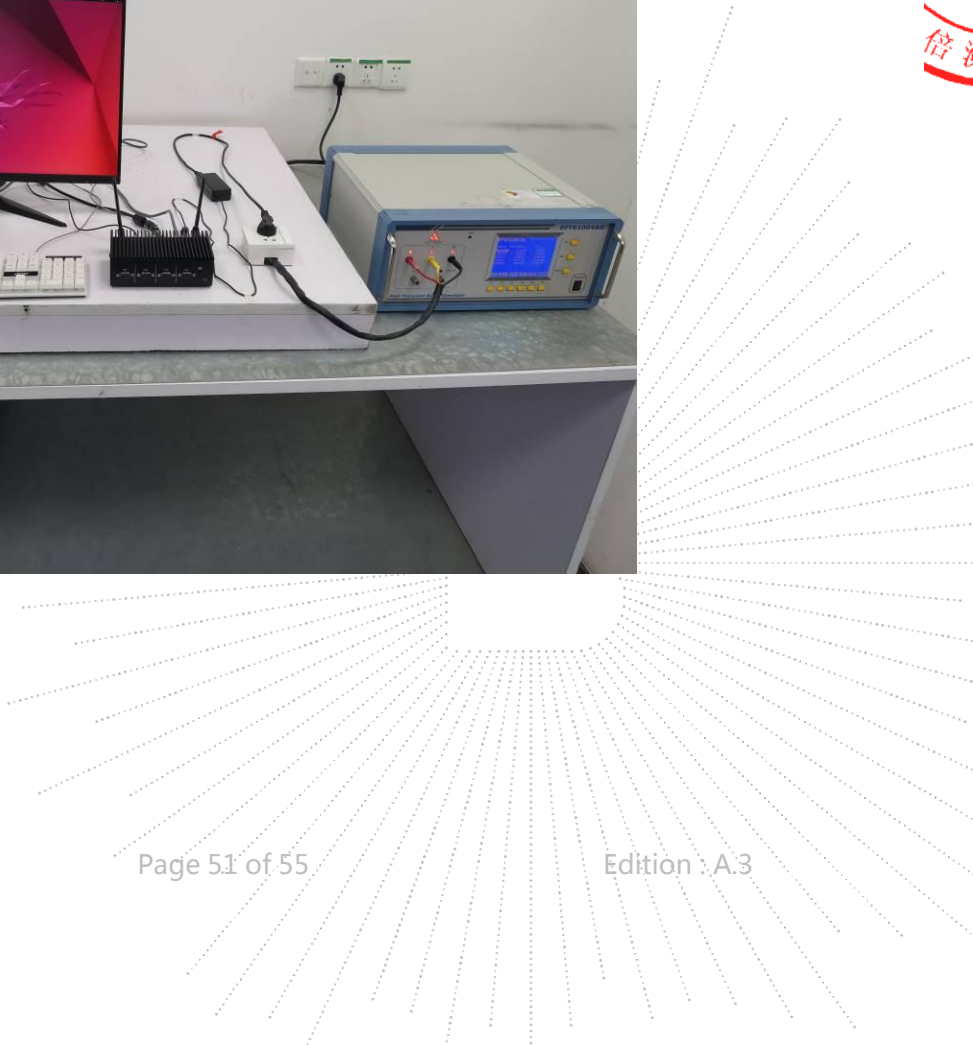


EFT



Surge

JC  
BC  
(PP  
倍速





CS

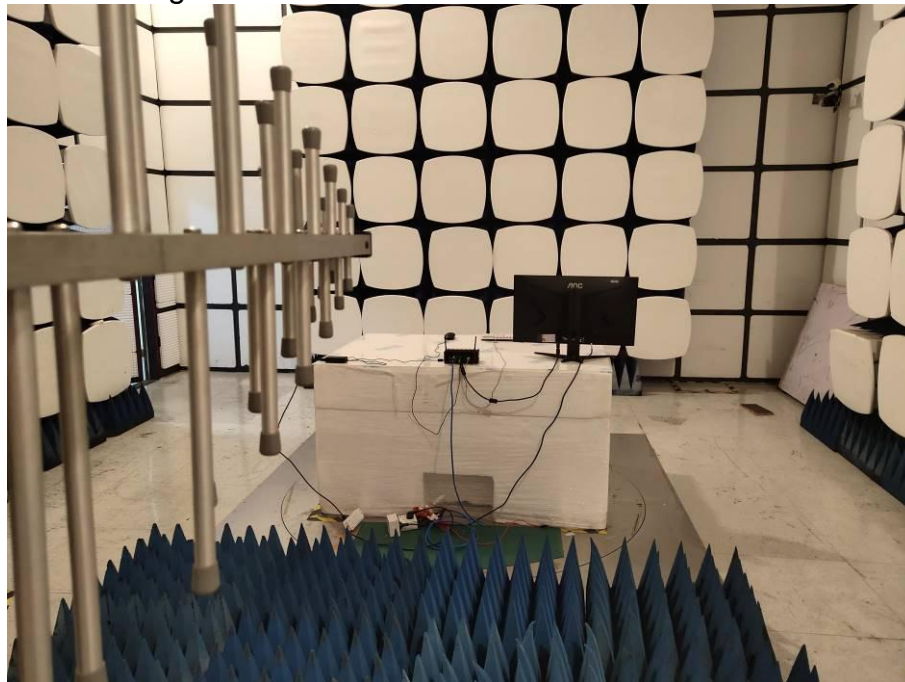


Dips

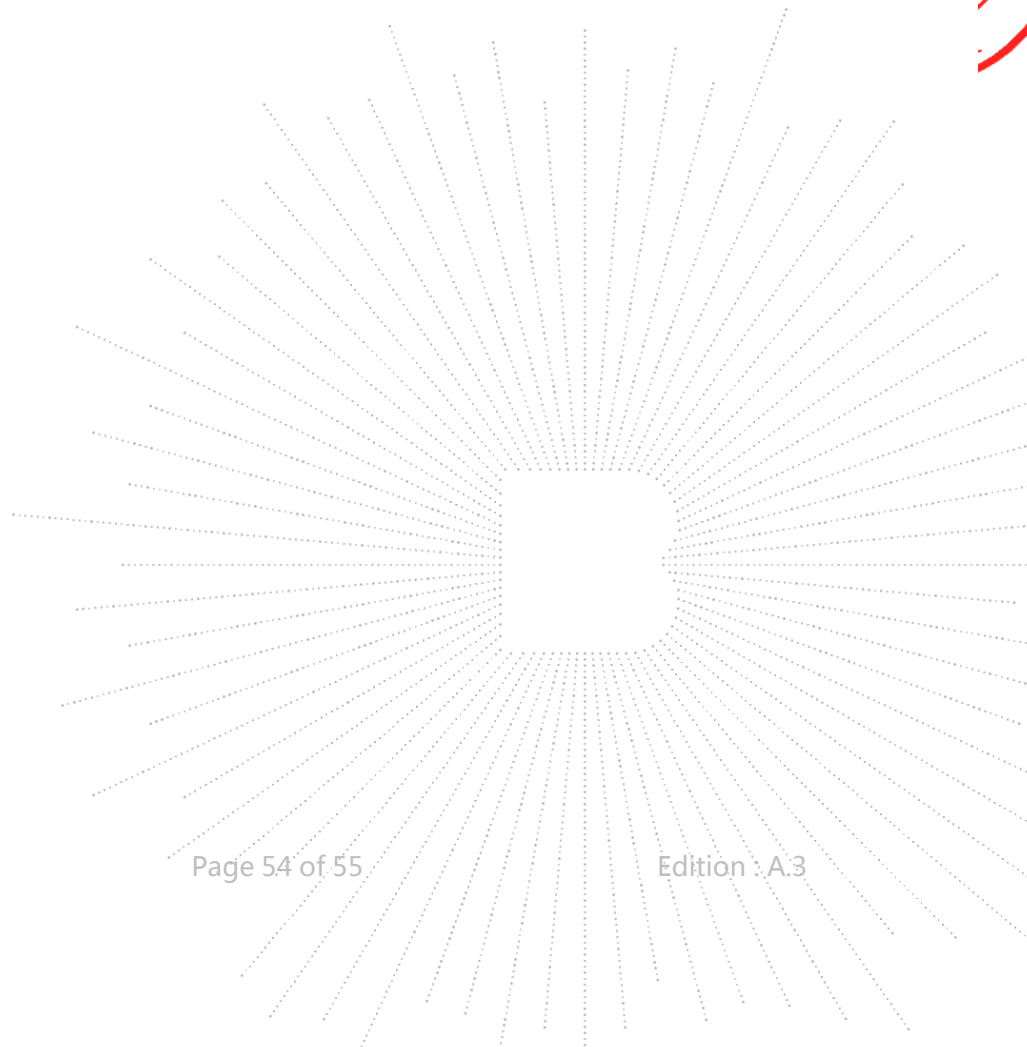
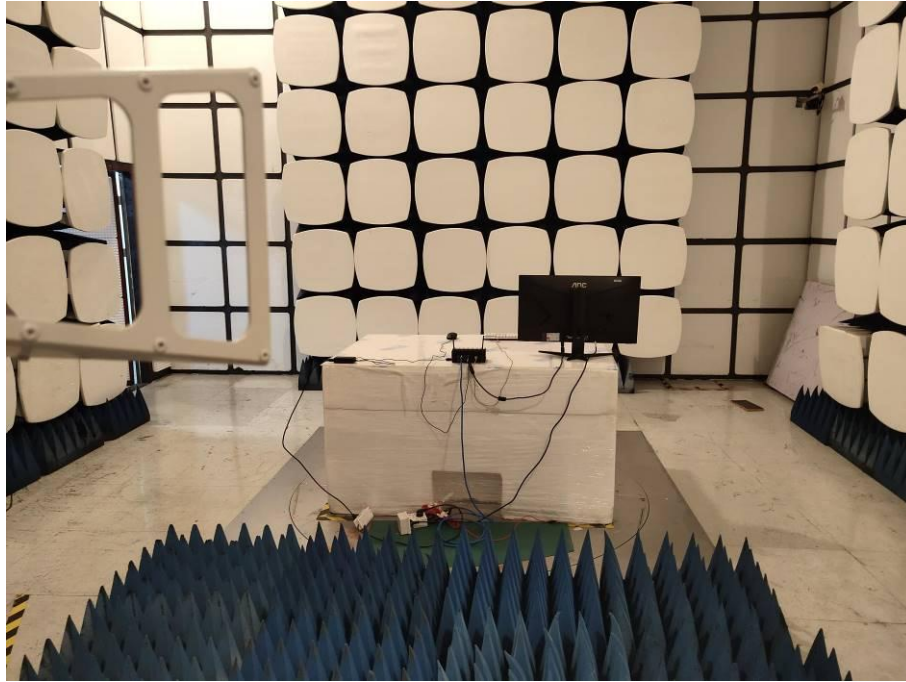
TEC  
CT  
RO  
財科



Continuous RF Electromagnetic Field Disturbances



HNC  
-O  
VED  
技



## STATEMENT

- 1.The equipment lists are traceable to the national reference standards.
- 2.The test report can not be partially copied unless prior written approval is issued from our lab.
- 3.The test report is invalid without stamp of laboratory.
- 4.The test report is invalid without signature of person(s) testing and authorizing.
- 5.The test process and test result is only related to the Unit Under Test.
- 6.The quality system of our laboratory is in accordance with ISO/IEC17025.
- 7.If there is any objection to report, the client should inform issuing laboratory within 15 days from the date of receiving test report.

Address:

101M., Unit 1, Building1, Pengyuan, No.18, Lilang Road, Shanglilang Community, Nanwan Street, Longgang District, Shenzhen, Guangdong, China

TEL : 400-788-9558

P.C.: 518103

FAX : 0755-33229357

Website : <http://www.chnbctc.com>

E-Mail : [bctc@bctc-lab.com.cn](mailto:bctc@bctc-lab.com.cn)

\*\*\*\*\* END \*\*\*\*\*